

For Research Use Only

# CARM1 Recombinant antibody, PBS Only

Catalog Number: 85146-3-PBS



## Basic Information

<b>Catalog Number:</b> 85146-3-PBS	<b>GenBank Accession Number:</b> NM_199141	<b>Purification Method:</b> Protein A purification
<b>Size:</b> 1 mg/ml	<b>GeneID (NCBI):</b> 10498	<b>CloneNo.:</b> 242651F10
<b>Source:</b> Rabbit	<b>UNIPROT ID:</b> Q86X55	
<b>Isotype:</b> IgG	<b>Full Name:</b> coactivator-associated arginine methyltransferase 1	
	<b>Calculated MW:</b> 66 kDa	
	<b>Observed MW:</b> 63-65 kDa	

## Applications

**Tested Applications:**  
WB, Indirect ELISA

**Species Specificity:**  
human, mouse, rat

## Background Information

CARM1, also named as PRMT4, belongs to the protein arginine N-methyltransferase family. It is a dual functional coregulator that facilitates transcription initiation by methylation of Arg17 and Arg26 of histone H3 and also dictates the subsequent coactivator complex disassembly by methylation of the steroid receptor coactivator family coactivators and p300/cAMP-response element-binding protein. CARM1 functions as a coactivator for many nuclear receptors, such as oestrogen receptor, androgen receptor, thyroid receptor and farnesoid X-receptor. It also coactivates other transcription factors such as myocyte enhancer factor 2C (MEF2C),  $\beta$ -catenin, p53, nuclear factor (NF)- $\kappa$ B and the cAMP-responsive element-binding factor. The enzymatic activity and coactivator function of CARM1 has been found to be inactivated through phosphorylation at a conserved serine residue at mitosis stage. This antibody was generated against a synthetic peptide corresponding to a fragment of human CARM1. It is expected to specifically recognize the CRAM1. In certain type of cells, like HeLa, double bands can be detected with this antibody. This may due to the additional PTM sites in cells themselves.

## Storage

**Storage:**  
Store at -80°C.  
**The product is shipped with ice packs. Upon receipt, store it immediately at -80°C**

**Storage Buffer:**  
PBS Only

For technical support and original validation data for this product please contact:

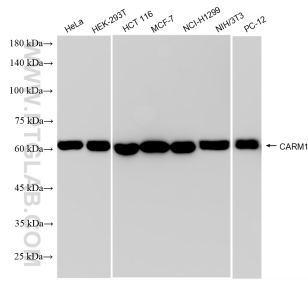
T: 4006900926

E: [Proteintech-CN@ptglab.com](mailto:Proteintech-CN@ptglab.com)

W: [ptgcn.com](http://ptgcn.com)

**This product is exclusively available under Proteintech Group brand and is not available to purchase from any other manufacturer.**

## Selected Validation Data



Various lysates were subjected to SDS PAGE followed by western blot with 85146-3-RR (CARM1 antibody) at dilution of 1:10000 incubated at room temperature for 1.5 hours. This data was developed using the same antibody clone with 85146-3-PBS in a different storage buffer formulation.