

For Research Use Only

RFC1 Recombinant antibody, PBS Only (Capture)

Catalog Number: 85148-1-PBS



Basic Information

Catalog Number: 85148-1-PBS	GenBank Accession Number: BC051751	Purification Method: Protein A purification
Concentration: 1000 ug/ml	GeneID (NCBI): 5981	CloneNo.: 242818A5
Source: Rabbit	UNIPROT ID: P35251	
Isotype: IgG	Full Name: replication factor C (activator 1) 1, 145kDa	
Immunogen Catalog Number: AG13585	Calculated MW: 128 kDa	
	Observed MW: 128-150 kDa	

Applications

Tested Applications:
WB, Cytometric bead array, Indirect ELISA

Species Specificity:
human

Background Information

Replication factor C subunit 1 (RFC1) is a pentameric DNA polymerase accessory protein involved in DNA replication and repair (PMID: 10051561). It was reported as a cause of cerebellar ataxia with neuropathy and vestibular areflexia syndrome (CANVAS) (PMID: 30926972).

Storage

Storage:
Store at -80°C.
The product is shipped with ice packs. Upon receipt, store it immediately at -80°C

Storage Buffer:
PBS Only

For technical support and original validation data for this product please contact:

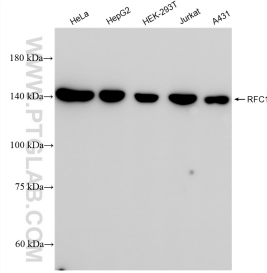
T: 4006900926

E: Proteintech-CN@ptglab.com

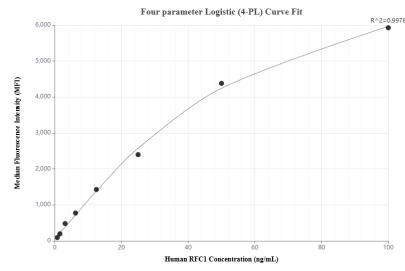
W: ptgcn.com

This product is exclusively available under Proteintech Group brand and is not available to purchase from any other manufacturer.

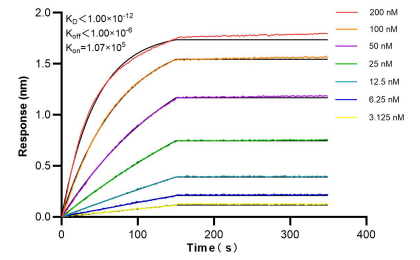
Selected Validation Data



HeLa cells were subjected to SDS PAGE followed by western blot with 85148-1-RR (RFC1 antibody) at dilution of 1:10000 incubated at room temperature for 1.5 hours. This data was developed using the same antibody clone with 85148-1-PBS in a different storage buffer formulation.



Cytometric bead array standard curve of MP01865-1, RFC1 Recombinant Matched Antibody Pair, PBS Only. Capture antibody: 85148-1-PBS. Detection antibody: 85148-2-PBS. Standard: Ag13585. Range: 0.781-100 ng/mL



Bi-layer interferometry (BLI) kinetic assays of 85148-1-RR against Human RFC1 were performed. The affinity constant is below 1 pM.