

For Research Use Only

RFC1 Recombinant antibody

Catalog Number: 85148-1-RR



Basic Information

Catalog Number:

85148-1-RR

Concentration:

1000 µg/ml

Source:

Rabbit

Isotype:

IgG

Immunogen Catalog Number:

AG13585

GenBank Accession Number:

BC051751

GeneID (NCBI):

5981

UNIPROT ID:

P35251

Full Name:

replication factor C (activator 1) 1,

145kDa

Calculated MW:

128 kDa

Observed MW:

128-150 kDa

Purification Method:

Protein A purification

CloneNo.:

242818A5

Recommended Dilutions:

WB 1:5000-1:50000

Applications

Tested Applications:

WB, ELISA

Species Specificity:

human

Positive Controls:

WB : HeLa cells, HepG2 cells, HEK-293T cells, Jurkat cells, A431 cells

Background Information

Replication factor C subunit 1 (RFC1) is a pentameric DNA polymerase accessory protein involved in DNA replication and repair (PMID: 10051561). It was reported as a cause of cerebellar ataxia with neuropathy and vestibular areflexia syndrome (CANVAS) (PMID: 30926972).

Storage

Storage:

Store at -20°C. Stable for one year after shipment.

Storage Buffer:

PBS with 0.02% sodium azide and 50% glycerol pH 7.3.

Aliquoting is unnecessary for -20°C storage

For technical support and original validation data for this product please contact:

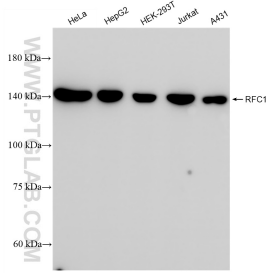
T: 4006900926

E: Proteintech-CN@ptglab.com

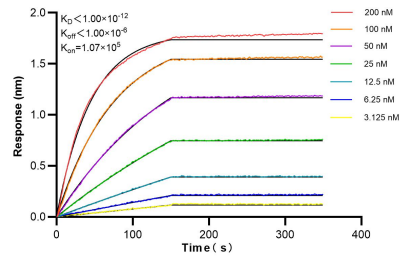
W: ptgcn.com

This product is exclusively available under Proteintech Group brand and is not available to purchase from any other manufacturer.

Selected Validation Data



HeLa cells were subjected to SDS PAGE followed by western blot with 85148-1-RR (RFC1 antibody) at dilution of 1:10000 incubated at room temperature for 1.5 hours.



Biolayer interferometry (BLI) kinetic assays of 85148-1-RR against Human RFC1 were performed. The affinity constant is below 1 pM.