

For Research Use Only

RFC1 Recombinant antibody, PBS Only (Capture/Detector)

Catalog Number: 85148-4-PBS



Basic Information

Catalog Number:

85148-4-PBS

Concentration:

1000 ug/ml

Source:

Rabbit

Isotype:

IgG

Immunogen Catalog Number:

AG13585

GenBank Accession Number:

BC051751

GeneID (NCBI):

5981

UNIPROT ID:

P35251

Full Name:

replication factor C (activator 1) 1,

145kDa

Calculated MW:

128 kDa

Purification Method:

Protein A purification

CloneNo.:

242818H6

Applications

Tested Applications:

WB, IF/ICC, Cytometric bead array, Sandwich ELISA,
Indirect ELISA, Sample test

Species Specificity:

human

Background Information

Storage

Storage:

Store at -80°C.

The product is shipped with ice packs. Upon receipt, store it immediately at -80°C

Storage Buffer:

PBS Only

For technical support and original validation data for this product please contact:

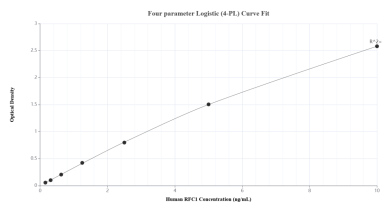
T: 4006900926

E: Proteintech-CN@ptglab.com

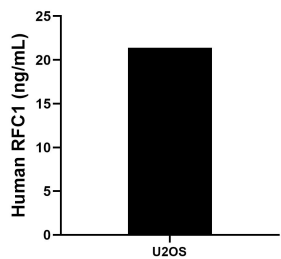
W: ptgcn.com

This product is exclusively available under Proteintech Group brand and is not available to purchase from any other manufacturer.

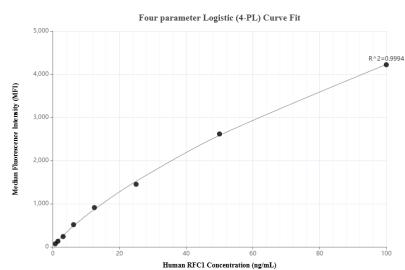
Selected Validation Data



Sandwich ELISA standard curve of MP01865-3, Human RFC1 Recombinant Matched Antibody Pair - PBS only. 85148-6-PBS was coated to a plate as the capture antibody and incubated with serial dilutions of standard Ag13585. 85148-4-PBS was HRP conjugated as the detection antibody. Range: 0.156-10 ng/mL



The mean RFC1 concentration was determined to be 21.39 ng/mL in U2OS cell extract based on a 3.50 mg/mL extract load.



Cytometric bead array standard curve of MP01865-2, RFC1 Recombinant Matched Antibody Pair, PBS Only. Capture antibody: 85148-4-PBS. Detection antibody: 85148-3-PBS. Standard: Ag13585. Range: 0.781-100 ng/mL