

For Research Use Only

Glycophorin A/CD235a Recombinant antibody, PBS Only (Capture)

Catalog Number: 85182-2-PBS



Basic Information

Catalog Number: 85182-2-PBS	GenBank Accession Number: BC005319	Purification Method: Protein A purification
Concentration: 1 mg/ml	GeneID (NCBI): 2993	CloneNo.: 242822E1
Source: Rabbit	UNIPROT ID: P02724	
Isotype: IgG	Full Name: glycophorin A (MNS blood group)	
	Calculated MW: 150 aa, 16 kDa	

Applications

Tested Applications:
Cytometric bead array, Indirect ELISA

Species Specificity:
human

Background Information

Storage

Storage:
Store at -80°C.
The product is shipped with ice packs. Upon receipt, store it immediately at -80°C

Storage Buffer:
PBS Only

For technical support and original validation data for this product please contact:

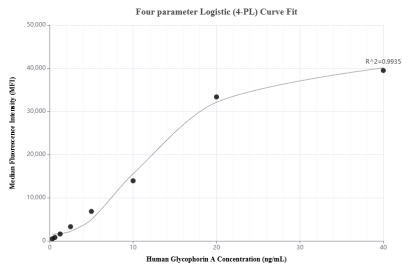
T: 4006900926

E: Proteintech-CN@ptglab.com

W: ptgcn.com

This product is exclusively available under Proteintech Group brand and is not available to purchase from any other manufacturer.

Selected Validation Data



Cytometric bead array standard curve of MP01888-1, Glycophorin A Recombinant Matched Antibody Pair, PBS Only. Capture antibody: 85182-2-PBS. Detection antibody: 85182-3-PBS. Standard: Eg2336. Range: 0.313-40 ng/mL.