

For Research Use Only

# GYPA Recombinant antibody, PBS Only (Detector)

Catalog Number: 85182-3-PBS



## Basic Information

Catalog Number:

85182-3-PBS

Size:

1 mg/ml

Source:

Rabbit

Isotype:

IgG

GenBank Accession Number:

BC005319

GeneID (NCBI):

2993

UNIPROT ID:

P02724

Full Name:

glycophorin A (MNS blood group)

Calculated MW:

150 aa, 16 kDa

Purification Method:

Protein A purification

CloneNo.:

242822H5

## Applications

Tested Applications:

Cytometric bead array, Indirect ELISA

Species Specificity:

human

## Background Information

### Storage

Storage:

Store at -80°C.

The product is shipped with ice packs. Upon receipt, store it immediately at -80°C

Storage Buffer:

PBS Only

For technical support and original validation data for this product please contact:

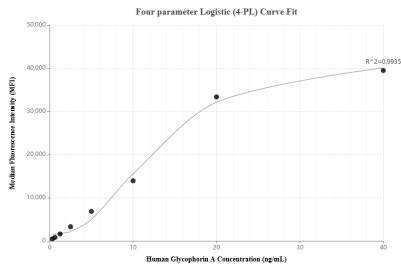
T: 4006900926

E: [Proteintech-CN@ptglab.com](mailto:Proteintech-CN@ptglab.com)

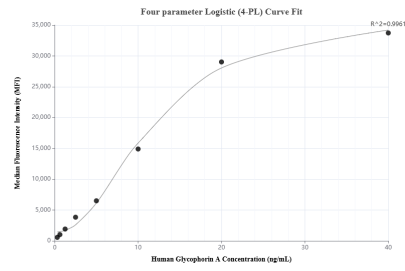
W: [ptgcn.com](http://ptgcn.com)

This product is exclusively available under Proteintech Group brand and is not available to purchase from any other manufacturer.

## Selected Validation Data



Cytometric bead array standard curve of MP01888-1, Glycophorin A Recombinant Matched Antibody Pair, PBS Only. Capture antibody: 85182-2-PBS. Detection antibody: 85182-3-PBS. Standard: Eg2336. Range: 0.313-40 ng/mL.



Cytometric bead array standard curve of MP01888-2, Glycophorin A Recombinant Matched Antibody Pair, PBS Only. Capture antibody: 85182-1-PBS. Detection antibody: 85182-3-PBS. Standard: Eg2336. Range: 0.313-40 ng/mL.