

For Research Use Only

LAMP3/CD208 Recombinant antibody, PBS Only (Capture)

Catalog Number: 85398-2-PBS



Basic Information

Catalog Number:

85398-2-PBS

Concentration:

1 mg/ml

Source:

Rabbit

Isotype:

IgG

GenBank Accession Number:

NM_014398.4

GeneID (NCBI):

27074

UNIPROT ID:

Q9UQV4

Full Name:

lysosomal-associated membrane
protein 3

Calculated MW:

44 kDa

Purification Method:

Protein A purification

CloneNo.:

242748C1

Applications

Tested Applications:

Cytometric bead array, Sandwich ELISA, Indirect ELISA,
Sample test

Species Specificity:

human

Background Information

Storage

Storage:

Store at -80°C.

The product is shipped with ice packs. Upon receipt, store it immediately at -80°C

Storage Buffer:

PBS Only

For technical support and original validation data for this product please contact:

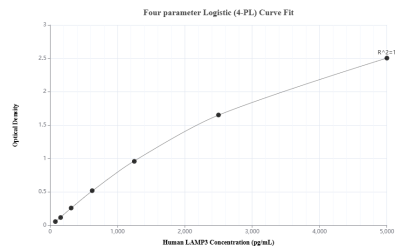
T: 4006900926

E: Proteintech-CN@ptglab.com

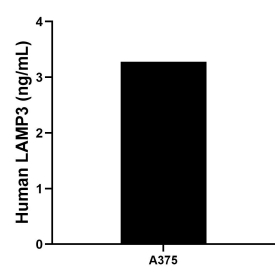
W: ptgcn.com

This product is exclusively available under Proteintech Group brand and is not available to purchase from any other manufacturer.

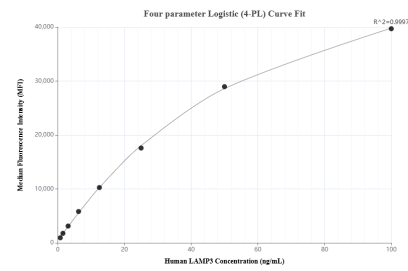
Selected Validation Data



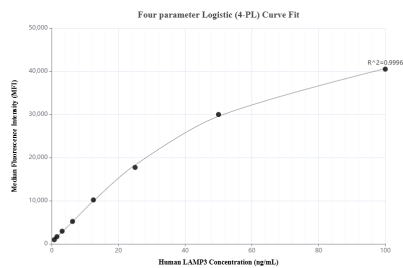
Sandwich ELISA standard curve of MP01929-1, Human LAMP3 Recombinant Matched Antibody Pair - PBS only. 85398-2-PBS was coated to a plate as the capture antibody and incubated with serial dilutions of standard Eg3594. 85398-3-PBS was HRP conjugated as the detection antibody. Range: 78.1-5000 pg/mL



The mean LAMP3 concentration was determined to be 3.28 ng/mL in A375 cell extract based on a 1.8 mg/mL extract load.



Cytometric bead array standard curve of MP01929-2, LAMP3 Recombinant Matched Antibody Pair, PBS Only. Capture antibody: 85398-2-PBS. Detection antibody: 85398-1-PBS. Standard: Eg3594. Range: 0.781-100 ng/mL



Cytometric bead array standard curve of MP01929-1, LAMP3 Recombinant Matched Antibody Pair, PBS Only. Capture antibody: 85398-2-PBS. Detection antibody: 85398-3-PBS. Standard: Eg3594. Range: 0.781-100 ng/mL