

For Research Use Only

CYP17A1 Recombinant antibody, PBS Only (Capture/Detector)

Catalog Number:85690-2-PBS



Basic Information

| | | |
|--|---|---|
| Catalog Number: 85690-2-PBS | GenBank Accession Number: BC062997 | Purification Method: Protein A purification |
| Concentration: 1 mg/ml | GeneID (NCBI): 1586 | CloneNo.: 243076B8 |
| Source: Rabbit | UNIPROT ID: P05093 | |
| Isotype: IgG | Full Name: cytochrome P450, family 17, subfamily A, polypeptide 1 | |
| Immunogen Catalog Number: AG5899 | Calculated MW: 57 kDa | |

Applications

Tested Applications:
Cytometric bead array, Sandwich ELISA, Indirect ELISA, Sample test

Species Specificity:
human

Background Information

Storage

Storage:
Store at -80°C.
The product is shipped with ice packs. Upon receipt, store it immediately at -80°C

Storage Buffer:
PBS Only

For technical support and original validation data for this product please contact:

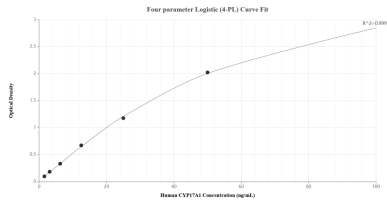
T: 4006900926

E: Proteintech-CN@ptglab.com

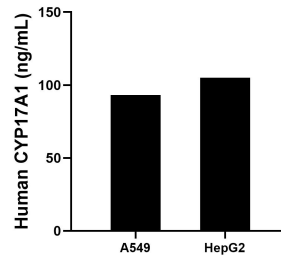
W: ptgcn.com

This product is exclusively available under Proteintech Group brand and is not available to purchase from any other manufacturer.

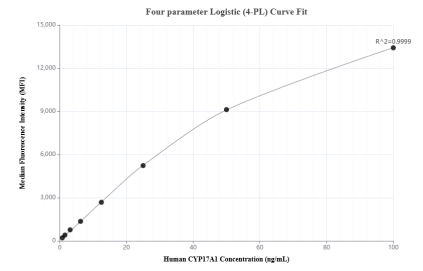
Selected Validation Data



Sandwich ELISA standard curve of MP02011-3, Human CYP17A1 Recombinant Matched Antibody Pair - PBS only. 85690-6-PBS was coated to a plate as the capture antibody and incubated with serial dilutions of standard Ag5899. 85690-2-PBS was HRP conjugated as the detection antibody. Range: 1.56-100 ng/mL



The mean CYP17A1 concentration was determined to be 93.13 ng/mL in A549 cell extract based on a 3.10 mg/mL extract load and 105.10 ng/mL in HepG2 cell extract based on a 1.80 mg/mL extract load.



Cytometric bead array standard curve of MP02011-2, CYP17A1 Recombinant Matched Antibody Pair, PBS Only. Capture antibody: 85690-2-PBS. Detection antibody: 85690-1-PBS. Standard: Ag5899. Range: 0.781-100 ng/mL