

For Research Use Only

ALDH2 Recombinant antibody, PBS Only (Capture)

Catalog Number: 86429-2-PBS



Basic Information

Catalog Number: 86429-2-PBS	GenBank Accession Number: BC002967	Purification Method: Protein A purification
Concentration: 1 mg/ml	GeneID (NCBI): 217	CloneNo.: 251287C8
Source: Rabbit	UNIPROT ID: P05091	
Isotype: IgG	Full Name: aldehyde dehydrogenase 2 family (mitochondrial)	
Immunogen Catalog Number: AG7452	Calculated MW: 56 kDa	

Applications

Tested Applications:
Cytometric bead array, Sandwich ELISA, Indirect ELISA,
Sample test

Species Specificity:
human

Background Information

Storage

Storage:
Store at -80°C.
The product is shipped with ice packs. Upon receipt, store it immediately at -80°C

Storage Buffer:
PBS only, pH7.3

For technical support and original validation data for this product please contact:

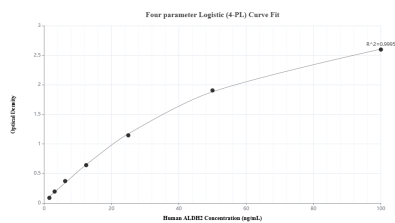
T: 4006900926

E: Proteintech-CN@ptglab.com

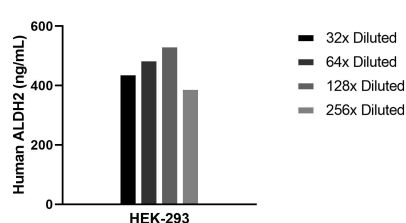
W: ptgcn.com

This product is exclusively available under Proteintech Group brand and is not available to purchase from any other manufacturer.

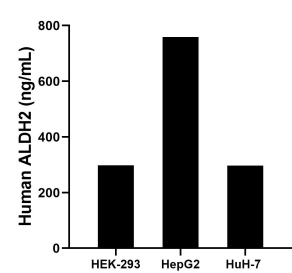
Selected Validation Data



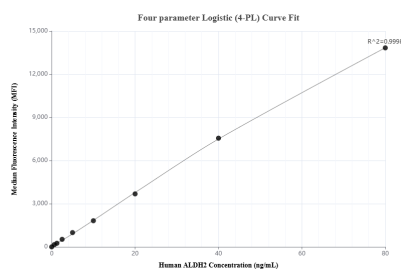
Sandwich ELISA standard curve of MP02438-2, Human ALDH2 Recombinant Matched Antibody Pair - PBS only. 86429-2-PBS was coated to a plate as the capture antibody and incubated with serial dilutions of standard Ag7452. 86429-4-PBS was HRP conjugated as the detection antibody. Range: 1.56-100 ng/mL



The mean ALDH2 concentration was determined to be 463.6 ng/mL in HEK-293 cell extract based on a 1.1 mg/mL extract load.



The mean ALDH2 concentration was determined to be 298.21 ng/mL in HEK-293 cell extract based on a 1.2 mg/mL extract load, 758.97 ng/mL in HepG2 cell extract based on a 1.2 mg/mL extract load and 296.77 ng/mL in HuH-7 cell extract based on a 1.2 mg/mL extract load.



Cytometric bead array standard curve of MP02438-1, ALDH2 Recombinant Matched Antibody Pair, PBS Only. Capture antibody: 86429-2-PBS. Detection antibody: 86429-1-PBS. Standard: Ag7452. Range: 0.625-80 ng/mL