

For Research Use Only

# Syntaxin 8 Recombinant monoclonal antibody, PBS Only (Detector)

Catalog Number: 86580-1-PBS



## Basic Information

Catalog Number:	86580-1-PBS	GenBank Accession Number:	BC009713	Purification Method:	Protein A purification
Concentration:	1 mg/ml	GeneID (NCBI):	9482	CloneNo.:	251516G10
Source:	Rabbit	UNIPROT ID:	Q9UNK0		
Isotype:	IgG	Full Name:	syntaxin 8		
Immunogen Catalog Number:	AG2850	Calculated MW:	236 aa, 27 kDa		
		Observed MW:	25 kDa		

## Applications

**Tested Applications:**  
WB, Cytometric bead array, Indirect ELISA

**Species Specificity:**  
human, mouse, rat

## Background Information

Syntaxin 8 (STX8), also known as CIP-1-associated regulator of cyclin B (CARB ), is a protein belonging to the syntaxin family. The gene of STX8 maps to chromosomal band 17p12 and it encodes a 236-amino-acid protein containing 1 t-SNARE coiled-coil homology domain. STX8 mRNA is broadly expressed in multiple human tissues, including the heart, brain, kidney, liver, lung, placenta, skeletal muscle, spleen, and pancreas (PMID: 10198254). STX8 is involved in protein trafficking from early to late endosomes via vesicle fusion and exocytosis.

## Storage

**Storage:**  
Store at -80°C.

**The product is shipped with ice packs. Upon receipt, store it immediately at -80°C**

**Storage Buffer:**  
PBS only, pH7.3

For technical support and original validation data for this product please contact:

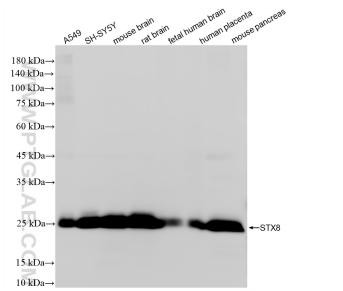
T: 4006900926

E: [Proteintech-CN@ptglab.com](mailto:Proteintech-CN@ptglab.com)

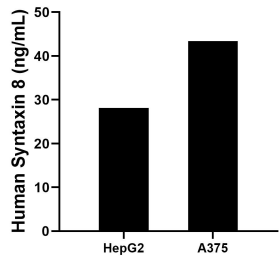
W: [ptgcn.com](http://ptgcn.com)

**This product is exclusively available under Proteintech Group brand and is not available to purchase from any other manufacturer.**

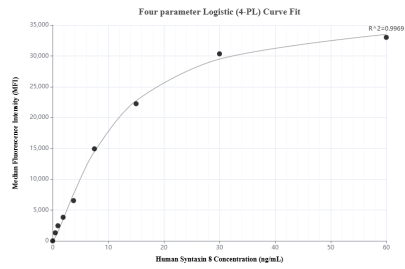
Selected Validation Data



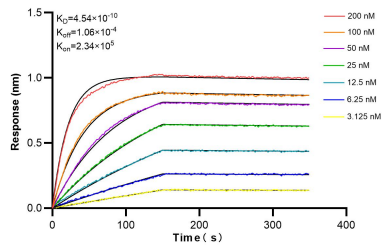
Various lysates were subjected to SDS PAGE followed by western blot with 86580-1-RR (STX8 antibody) at dilution of 1:30000 incubated at room temperature for 1.5 hours. This data was developed using the same antibody clone with 86580-1-PBS in a different storage buffer formulation.



The mean Syntaxin 8 concentration was determined to be 28.1 ng/mL in HepG2 cell extract based on a 1.2 mg/mL extract load, 43.4 ng/mL in A375 cell extract based on a 1.6 mg/mL extract load.



Cytometric bead array standard curve of MP02538-1, Syntaxin 8 Recombinant Matched Antibody Pair, PBS Only. Capture antibody: 86580-2-PBS. Detection antibody: 86580-1-PBS. Standard: Ag2850. Range: 0.469-60 ng/mL.



Biolayer interferometry (BLI) kinetic assays of 86580-1-RR against Human Syntaxin 8 were performed. The affinity constant is 0.454 nM.