

For Research Use Only



# Anti-Human CD226 Rabbit Recombinant Antibody, PBS Only

Catalog Number: 98002-1-PBS

## Basic Information

Catalog Number:	98002-1-PBS	GenBank Accession Number:	BC074787	Purification Method:	Protein A purification
Size:	1mg, 2 mg/ml	GeneID (NCBI):	10666	CloneNo.:	230041A3
Source:	Rabbit	ENSEMBL Gene ID:	ENSG00000150637		
Isotype:	IgG	UNIPROT ID:	Q15762		
		Full Name:	CD226 molecule		
		Calculated MW:	336 aa, 39 kDa		

## Applications

Tested Applications:  
FC

Species Specificity:  
human

## Background Information

CD226 (DNAM-1) is a ~65 kDa glycoprotein expressed on the surface of NK cells, platelets, monocytes and a subset of T cells. It is a member of the Ig-superfamily containing 2 Ig-like domains of the V-set. CD226 mediates cellular adhesion of platelets and megakaryocytic cells to vascular endothelial cells. The protein also plays a role in megakaryocytic cell maturation. Interactions of CD226 and its ligands, CD155 and CD112, induce NK and T cell-mediated cytotoxicity and cytokine secretion (PMID: 15039383).

## Storage

Storage:  
Store at -80°C. Stable for one year after shipment.  
**The product is shipped with ice packs. Upon receipt, store it immediately at -80°C**

Storage Buffer:  
PBS only

For technical support and original validation data for this product please contact:

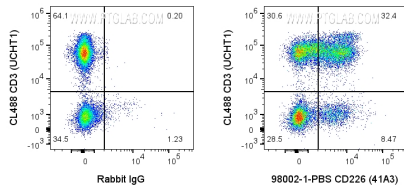
T: 4006900926

E: [Proteintech-CN@ptglab.com](mailto:Proteintech-CN@ptglab.com)

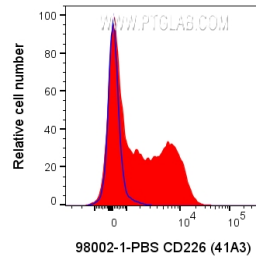
W: [ptgcn.com](http://ptgcn.com)

**This product is exclusively available under Proteintech Group brand and is not available to purchase from any other manufacturer.**

## Selected Validation Data



1X10<sup>6</sup> human PBMCs were surface stained with 0.2 ug Anti-Human CD226 Rabbit Recombinant Antibody (98002-1-PBS, Clone:41A3) or Rabbit IgG control Rabbit PolyAb and CoraLite®647-Conjugated AffiniPure Goat Anti-Rabbit IgG(H+L) at dilution 1:1000. Cells were then stained with CL488 Anti-Human CD3. Cells were not fixed. Lymphocytes were gated.



1X10<sup>6</sup> human PBMCs were surface stained with 0.2 ug Anti-Human CD226 Rabbit Recombinant Antibody (98002-1-PBS, Clone:41A3) or Rabbit IgG control Rabbit PolyAb and CoraLite®647-Conjugated AffiniPure Goat Anti-Rabbit IgG(H+L) at dilution 1:1000. Cells were not fixed. Lymphocytes were gated.