

For Research Use Only

# Anti-Human CD226 Rabbit Recombinant Antibody



Catalog Number: 98002-2-RR

## Basic Information

<b>Catalog Number:</b> 98002-2-RR	<b>GenBank Accession Number:</b> BC074787	<b>Purification Method:</b> Protein A purification
<b>Size:</b> 100ug, 1000 µg/ml	<b>GeneID (NCBI):</b> 10666	<b>CloneNo.:</b> 240673G4
<b>Source:</b> Rabbit	<b>ENSEMBL Gene ID:</b> ENSG00000150637	
<b>Isotype:</b> IgG	<b>UNIPROT ID:</b> Q15762	
	<b>Full Name:</b> CD226 molecule	
	<b>Calculated MW:</b> 336 aa, 39 kDa	

## Applications

**Tested Applications:**  
FC

**Species Specificity:**  
human

## Background Information

CD226 (DNAM-1) is a ~65 kDa glycoprotein expressed on the surface of NK cells, platelets, monocytes and a subset of T cells. It is a member of the Ig-superfamily containing 2 Ig-like domains of the V-set. CD226 mediates cellular adhesion of platelets and megakaryocytic cells to vascular endothelial cells. The protein also plays a role in megakaryocytic cell maturation. Interactions of CD226 and its ligands, CD155 and CD112, induce NK and T cell-mediated cytotoxicity and cytokine secretion (PMID: 15039383).

## Storage

**Storage:**  
Store at 2 - 8°C. Stable for one year after shipment.

**Storage Buffer:**  
PBS with 0.09% sodium azide, pH 7.3.

For technical support and original validation data for this product please contact:

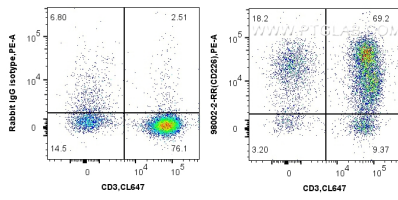
T: 4006900926

E: [Proteintech-CN@ptglab.com](mailto:Proteintech-CN@ptglab.com)

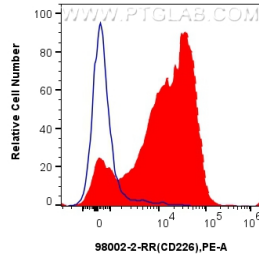
W: [ptgcn.com](http://ptgcn.com)

**This product is exclusively available under Proteintech Group brand and is not available to purchase from any other manufacturer.**

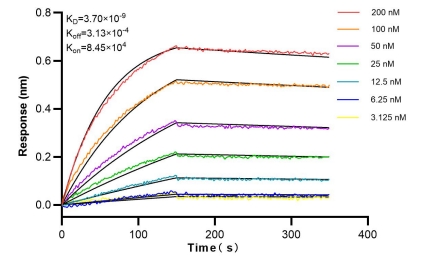
## Selected Validation Data



1x10<sup>6</sup> human PBMCs were surface stained with 0.25 ug Anti-Human CD226 Rabbit Recombinant Antibody (98002-2-RR, Clone: 240673G4) or Isotype Control, and PE-Conjugated AffiniPure Goat Anti-Rabbit IgG(H+L). Cells were co-stained with CoraLite® Plus 647 Anti-Human CD3 (OKT3) Mouse IgG2a Recombinant Antibody (CL647-65569, Clone: OKT3). Cells were not fixed. Lymphocytes were gated.



1x10<sup>6</sup> human PBMCs were surface stained with 0.25 ug Anti-Human CD226 Rabbit Recombinant Antibody (98002-2-RR, Clone:240673G4) (red) or Isotype Control (blue) and PE-Conjugated AffiniPure Goat Anti-Rabbit IgG(H+L). Cells were not fixed. Lymphocytes were gated.



Biolayer interferometry (BLI) kinetic assays of 98036-1-RR against Human CD226 were performed. The affinity constant is 3.70 nM.