

For Research Use Only

Anti-Mouse Gm-csf Rabbit Recombinant Antibody, PBS Only

Catalog Number: 98014-1-PBS



Basic Information

Catalog Number:

98014-1-PBS

Size:

1mg, 2mg/ml

Source:

Rabbit

Isotype:

IgG

GenBank Accession Number:

NM-009969

GeneID (NCBI):

12981

UNIPROT ID:

P01587

Full Name:

colony stimulating factor 2
(granulocyte-macrophage)

Purification Method:

Protein A purification

CloneNo.:

230286E11

Applications

Tested Applications:

FC (Intra)

Species Specificity:

mouse

Background Information

Gm-csf, also known as Csf2, is a monomeric glycoprotein secreted by macrophages, T cells, mast cells, NK cells, endothelial cells and fibroblasts that functions as a cytokine. Gm-csf was first characterized as a hematopoietic growth factor that stimulates the proliferation of myeloid cells from bone-marrow progenitors. Gm-csf is now recognized as an important activating and differentiation factor for immune cells, and is essential for a wide range of biological processes in both innate and adaptive immunity. Gm-csf has been shown to protect against pulmonary infection and intestinal inflammation, and it is necessary for normal pulmonary and colon homeostasis.

Storage

Storage:

Store at -80°C.

The product is shipped with ice packs. Upon receipt, store it immediately at -80°C

Storage Buffer:

PBS Only

For technical support and original validation data for this product please contact:

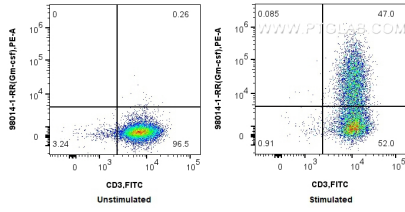
T: 4006900926

E: Proteintech-CN@ptglab.com

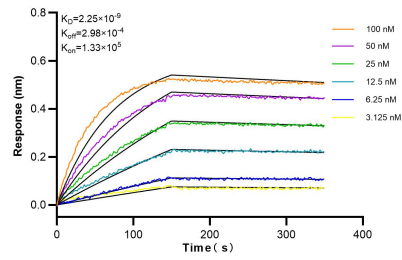
W: ptgcn.com

This product is exclusively available under Proteintech Group brand and is not available to purchase from any other manufacturer.

Selected Validation Data



1×10^6 unstimulated or PMA and ionomycin in presence of protein transport inhibitors stimulated C57BL/6 CD3 T cells were intracellularly stained with 0.25 ug Anti-Mouse Gm-csf (98014-1-RR, Clone: 230286E11) and PE-Conjugated AffiniPure Goat Anti-Rabbit IgG(H+L), and 0.5 ug FITC Plus Anti-Mouse CD3 (17A2) (FITC-65077, Clone: 17A2). Cells were fixed with 4% PFA and permeabilized with Flow Cytometry Perm Buffer (PF00011-C). This data was developed



Biolayer interferometry (BLI) kinetic assays of 98014-1-RR against Human Gm-csf were performed. The affinity constant is 2.25 nM.