

For Research Use Only

Anti-Mouse TLR4/CD284 Rabbit Recombinant Antibody, PBS Only

Catalog Number: 98018-1-PBS



Basic Information

Catalog Number:

98018-1-PBS

Size:

1mg, 2 mg/ml

Source:

Rabbit

Isotype:

IgG

Immunogen Catalog Number:

AG32998

GenBank Accession Number:

NM_021297

GeneID (NCBI):

21898

UNIPROT ID:

Q9QUK6

Full Name:

toll-like receptor 4

Calculated MW:

96 kDa

Purification Method:

Protein A purification

CloneNo.:

230463C7

Applications

Tested Applications:

FC

Species Specificity:

mouse

Background Information

TLR4, also named as CD284, belongs to the Toll-like receptor family. TLR4 interacts with LY96 and CD14 to mediate the innate immune response to bacterial lipopolysaccharide (LPS). TLR4 acts via MYD88, TIRAP and TRAF6, leading to NF- κ B activation, cytokine secretion and the inflammatory response. Three alternatively spliced transcript variants that encode different protein isoforms have been described.

Storage

Storage:

Store at -80°C.

The product is shipped with ice packs. Upon receipt, store it immediately at -80°C

Storage Buffer:

PBS Only

For technical support and original validation data for this product please contact:

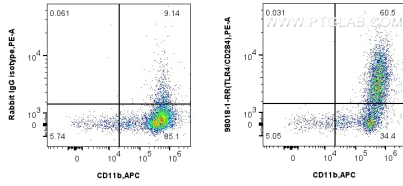
T: 4006900926

E: Proteintech-CN@ptglab.com

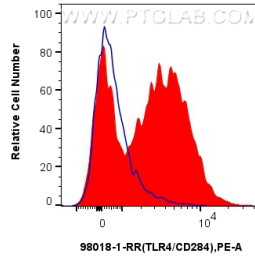
W: ptgcn.com

This product is exclusively available under Proteintech Group brand and is not available to purchase from any other manufacturer.

Selected Validation Data



1x10⁶ Balb/c mouse peritoneal macrophages were surface stained with 0.25 ug Anti-Mouse TLR4/CD284 Rabbit Recombinant Antibody (98018-1-RR, Clone: 230463C7) or 0.25 ug Isotype Control, and PE-Conjugated AffiniPure Goat Anti-Rabbit IgG(H+L). Cells were then stained with APC Anti-Mouse CD11b (M1/70) (APC-65055, Clone: M1/70). Cells were not fixed. This data was developed using the same antibody clone with 98018-1-PBS in a different storage buffer



1x10⁶ Balb/c mouse peritoneal macrophages were surface stained with 0.25 ug Anti-Mouse TLR4/CD284 Rabbit Recombinant Antibody (98018-1-RR, Clone: 230463C7) and PE-Conjugated AffiniPure Goat Anti-Rabbit IgG(H+L) (red), or 0.25 ug Isotype Control and PE-Conjugated AffiniPure Goat Anti-Rabbit IgG(H+L) (blue). Cells were not fixed. This data was developed using the same antibody clone with 98018-1-PBS in a different storage buffer formulation.