

For Research Use Only

Anti-Mouse TREM-1/CD354 Rabbit Recombinant Antibody, PBS Only

Catalog Number: 98022-1-PBS



Basic Information

Catalog Number:

98022-1-PBS

Concentration:

1mg, 2 mg/ml

Source:

Rabbit

Isotype:

IgG

GenBank Accession Number:

NM_021406.5

GeneID (NCBI):

58217

UNIPROT ID:

Q9JKE2

Full Name:

triggering receptor expressed on myeloid cells 1

Calculated MW:

25 kDa

Purification Method:

Protein A purification

CloneNo.:

240219H1

Applications

Tested Applications:

FC

Species Specificity:

mouse

Background Information

Triggering receptor expressed on myeloid cells 1 (TREM-1, also known as CD354) is a member of the immunoglobulin superfamily, which is expressed on neutrophils and monocytes. TREM1 plays a role in the innate immune system. TREM1 amplifies neutrophil and monocyte-mediated inflammatory responses triggered by bacterial and fungal infections by stimulating release of pro-inflammatory chemokines and cytokines, as well as increased surface expression of cell activation markers.

Storage

Storage:

Store at -80°C.

The product is shipped with ice packs. Upon receipt, store it immediately at -80°C

Storage Buffer:

PBS Only

For technical support and original validation data for this product please contact:

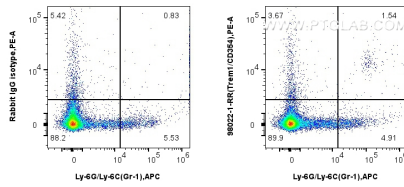
T: 4006900926

E: Proteintech-CN@ptglab.com

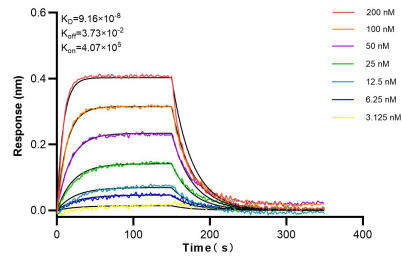
W: ptgcn.com

This product is exclusively available under Proteintech Group brand and is not available to purchase from any other manufacturer.

Selected Validation Data



1x10⁶ mouse splenocytes were surface stained with 0.25 ug Anti-Mouse TREM-1/CD354 Rabbit Recombinant Antibody (98022-1-RR, Clone:240219H1) or Rabbit IgG Isotype Control Recombinant Antibody (98136-1-RR, Clone: 240953C9) and PE-Conjugated Goat Anti-Rabbit IgG(H+L). Cells were then stained with APC Anti-Mouse Ly-6G/Ly-6C (Gr-1) (RB6-8C5) (APC-65140, Clone: RB6-8C5). Cells were not fixed. This data was developed using the same antibody clone



Biolayer interferometry (BLI) kinetic assays of 98022-1-RR against Mouse CD354/TREM-1 were performed. The affinity constant is 91.8 nM.