

For Research Use Only

Anti-Mouse MCP-1/CCL2 Rabbit Recombinant Antibody, PBS Only

Catalog Number: 98028-1-PBS



Basic Information

Catalog Number: 98028-1-PBS	GenBank Accession Number: NM-011333	Purification Method: Protein A purification
Size: 1mg, 2 mg/ml	GeneID (NCBI): 20296	CloneNo.: 230483A9
Source: Rabbit	UNIPROT ID: P10148	
Isotype: IgG	Full Name: chemokine (C-C motif) ligand 2	

Applications

Tested Applications:
FC (Intra)

Species Specificity:
mouse

Background Information

Monocyte chemoattractant protein 1 (MCP-1; also known as CCL2), is chemotactic for monocyte/macrophage, B-cell, and T-lymphocyte, and belongs to the CC subfamily of chemokines. Chemokines are a superfamily of secreted proteins involved in immunoregulatory and inflammatory processes. The human ortholog has been implicated in the pathogenesis of diseases characterized by monocytic infiltrates, such as psoriasis, rheumatoid arthritis, and atherosclerosis.

Storage

Storage:
Store at -80°C.
The product is shipped with ice packs. Upon receipt, store it immediately at -80°C

Storage Buffer:
PBS Only

For technical support and original validation data for this product please contact:

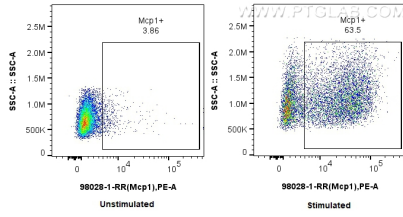
T: 4006900926

E: Proteintech-CN@ptglab.com

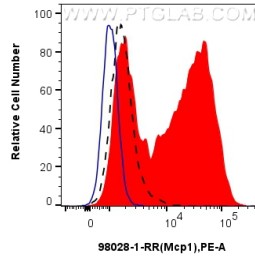
W: ptgcn.com

This product is exclusively available under Proteintech Group brand and is not available to purchase from any other manufacturer.

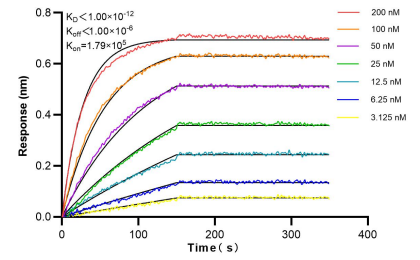
Selected Validation Data



1x10⁶ unstimulated or LPS and Brefeldin A treated RAW 264.7 cells were intracellularly stained with 0.25 ug Anti-Mouse MCP-1 Rabbit Recombinant Antibody (98028-1-RR, Clone: 230483A9) and PE-conjugated Goat Anti-Rabbit IgG. Cells were fixed with 4% PFA and permeabilized with Flow Cytometry Perm Buffer (PF00011-C). This data was developed using the same antibody clone with 98028-1-PBS in a different storage buffer formulation.



1x10⁶ unstimulated (black) or LPS and Brefeldin A treated RAW 264.7 cells were intracellularly stained with 0.25 ug Anti-Mouse MCP-1 Rabbit Recombinant Antibody (98028-1-RR, Clone: 230483A9) or 0.25 ug Isotype Control (blue), and PE-conjugated Goat Anti-Rabbit IgG. Cells were fixed with 4% PFA and permeabilized with Flow Cytometry Perm Buffer (PF00011-C). This data was developed using the same antibody clone with 98028-1-PBS in a different storage buffer



Bi-layer interferometry (BLI) kinetic assays of 98028-1-RR against Mouse Mcp1 were performed. The affinity constant is below 1 nM.