

For Research Use Only

Anti-Human CD324 (E-cadherin) Rabbit Recombinant Antibody, PBS Only

Catalog Number: 98030-2-PBS



Basic Information

Catalog Number: 98030-2-PBS	GenBank Accession Number: BC141838	Purification Method: Protein A purification
Size: 1mg, 2 mg/ml	GeneID (NCBI): 999	CloneNo.: 240159B4
Source: Rabbit	UNIPROT ID: P12830	
Isotype: IgG	Full Name: cadherin 1, type 1, E-cadherin (epithelial)	
Immunogen Catalog Number: AG14973	Calculated MW: 882 aa, 97 kDa	

Applications

Tested Applications:
FC

Species Specificity:
human

Background Information

Cadherins are a family of transmembrane glycoproteins that mediate calcium-dependent cell-cell adhesion and play an important role in the maintenance of normal tissue architecture. E-cadherin (epithelial cadherin), also known as CD324, CDH1 (cadherin 1) or CAM 120/80, is a classical member of the cadherin superfamily which also include N-, P-, R-, and B-cadherins. E-cadherin is expressed on the cell surface in most epithelial tissues. The extracellular region of E-cadherin establishes calcium-dependent homophilic trans binding, providing specific interaction with adjacent cells, while the cytoplasmic domain is connected to the actin cytoskeleton through the interaction with p120-, α -, β -, and γ -catenin (plakoglobin). E-cadherin is important in the maintenance of the epithelial integrity, and is involved in mechanisms regulating proliferation, differentiation, and survival of epithelial cell. E-cadherin may also play a role in tumorigenesis. It is considered to be an invasion suppressor protein and its loss is an indicator of high tumor aggressiveness.

Storage

Storage:
Store at -80°C.
The product is shipped with ice packs. Upon receipt, store it immediately at -80°C

Storage Buffer:
PBS Only

For technical support and original validation data for this product please contact:

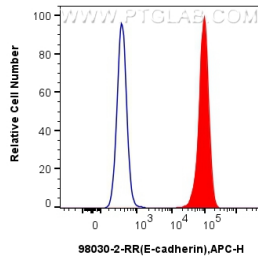
T: 4006900926

E: Proteintech-CN@ptglab.com

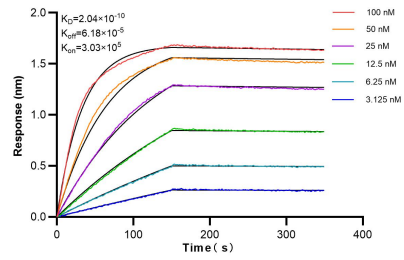
W: ptgcn.com

This product is exclusively available under Proteintech Group brand and is not available to purchase from any other manufacturer.

Selected Validation Data



1x10⁶ MCF-7 cells were surface stained with 0.25 ug Anti-Human CD324 (E-cadherin) Rabbit Recombinant Antibody (98030-2-RR, Clone:240159B4) and APC-Conjugated AffiniPure Goat Anti-Rabbit IgG(H+L)(red), or 0.25 ug Isotype Control (blue). Cells should be stained prior to fixation. This data was developed using the same antibody clone with 98030-2-PBS in a different storage buffer formulation.



Biolayer interferometry (BLI) kinetic assays of 98030-2-RR against Human E-cadherin were performed. The affinity constant is 0.204 nM.