

For Research Use Only

# Anti-Mouse IL-15 Rabbit Recombinant Antibody



Catalog Number: 98036-1-RR

## Basic Information

<b>Catalog Number:</b> 98036-1-RR	<b>GenBank Accession Number:</b> NM_001254747	<b>Purification Method:</b> Protein A purification
<b>Size:</b> 100ug, 1000 µg/ml	<b>GeneID (NCBI):</b> 16168	<b>CloneNo.:</b> 230285B3
<b>Source:</b> Rabbit	<b>UNIPROT ID:</b> P48346	
<b>Isotype:</b> IgG	<b>Full Name:</b> interleukin 15	
	<b>Calculated MW:</b> 19 kDa	

## Applications

**Tested Applications:**  
FC (Intra)

**Species Specificity:**  
mouse

## Background Information

IL-15 is a 4- $\alpha$ -helix bundle cytokine playing a pivotal role in stimulation of both innate and adaptive immune cells. It is produced primarily by keratinocytes, skeletal muscle cells, monocytes, and CD4+ T cells. It is a member of the common gamma chain family. The members of the common gamma chain family include the IL-2, IL-4, IL-7, IL-9, and IL-21 and require binding to the common gamma chain receptor for activation. It can be used in growth and maintenance of T and NK cells. It is also shown to be used in proliferation and functional effect of T cells for adoptive cell therapy. It is a glycosylated protein and HumanKine IL-15 appear as 12.5-25 kDa bands (PMID: 24587813, 26627006, 27849617, 31250350)

## Storage

**Storage:**  
Store at 2-8°C. Stable for one year after shipment.

**Storage Buffer:**  
PBS with 0.09% sodium azide.

For technical support and original validation data for this product please contact:

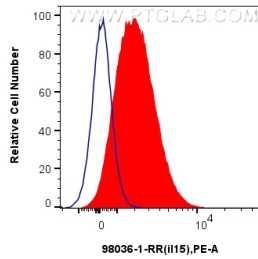
T: 4006900926

E: [Proteintech-CN@ptglab.com](mailto:Proteintech-CN@ptglab.com)

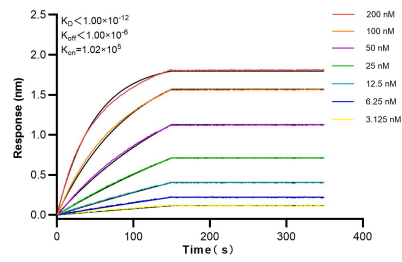
W: [ptgcn.com](http://ptgcn.com)

**This product is exclusively available under Proteintech Group brand and is not available to purchase from any other manufacturer.**

## Selected Validation Data



1x10<sup>6</sup> Mouse PBMCs were intracellularly stained with 0.25 µg Anti-Mouse IL-15 Rabbit Recombinant Antibody (98036-1-RR, Clone: 230285B3) (red) or Isotype Control (blue), and PE-Conjugated AffiniPure Goat Anti-Rabbit IgG(H+L). Cells were fixed with 4% PFA and permeabilized with Intracellular Staining Permeabilization Wash Buffer.



Biolayer interferometry (BLI) kinetic assays of 98036-1-RR against Mouse IL-15 were performed. The affinity constant is below 1 pM.