

For Research Use Only

# Anti-Mouse CD5 Rabbit Recombinant Antibody



Catalog Number: 98038-1-RR

## Basic Information

<b>Catalog Number:</b> 98038-1-RR	<b>GenBank Accession Number:</b> NM_007650.3	<b>Purification Method:</b> Protein A purification
<b>Size:</b> 100ug, 1 mg/ml	<b>GeneID (NCBI):</b> 12507	<b>CloneNo.:</b> 240244G7
<b>Source:</b> Rabbit	<b>UNIPROT ID:</b> P13379	
<b>Isotype:</b> IgG	<b>Full Name:</b> CD5 antigen	
	<b>Calculated MW:</b> 54 kDa	

## Applications

**Tested Applications:**  
FC

**Species Specificity:**  
Mouse

## Background Information

CD5 is a type I transmembrane glycoprotein of the scavenger receptor cysteine-rich family (PMID: 12403363). CD5 is expressed on a majority of thymocytes, mature T cells, B cell subsets, and peripheral blood dendritic cells (PMID: 9858516; 6156984; 10379049; 1384337). CD5 may act as a receptor in regulating T-cell proliferation. It functions as a negative regulator of TCR signaling during thymocyte development (PMID: 7542801).

## Storage

**Storage:**  
Store at 2-8°C. Stable for one year after shipment.

**Storage Buffer:**  
PBS with 0.09% sodium azide.

For technical support and original validation data for this product please contact:

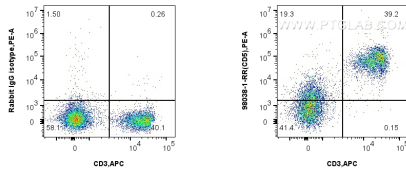
T: 4006900926

E: [Proteintech-CN@ptglab.com](mailto:Proteintech-CN@ptglab.com)

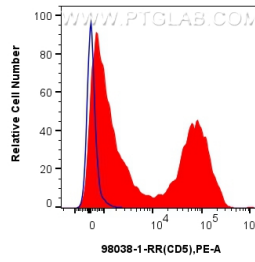
W: [ptgcn.com](http://ptgcn.com)

**This product is exclusively available under Proteintech Group brand and is not available to purchase from any other manufacturer.**

## Selected Validation Data



1x10<sup>6</sup> mouse splenocytes were surface stained with 0.25 ug Anti-Mouse CD5 Rabbit Recombinant Antibody (98038-1-RR, Clone: 240244G7) or 0.25 ug Isotype Control, and PE-Conjugated AffiniPure Goat Anti-Rabbit IgG(H+L). Cells were then stained with CoraLite® Plus 647 Anti-Mouse CD3 ε (145-2C11) (CL647-65060, Clone: 145-2C11). Cells were not fixed.



1x10<sup>6</sup> mouse splenocytes were surface stained with 0.25 ug Anti-Mouse CD5 Rabbit Recombinant Antibody (98038-1-RR, Clone: 240244G7) (red) or 0.25 ug Isotype Control (blue), and PE-Conjugated AffiniPure Goat Anti-Rabbit IgG(H+L). Cells were not fixed.