

For Research Use Only

Anti-Human CD14 Rabbit Recombinant Antibody



Catalog Number: 98040-1-RR

Basic Information

Catalog Number:

98040-1-RR

Size:

100ug, 1 mg/ml

Source:

Rabbit

Isotype:

IgG

GenBank Accession Number:

BC010507

GeneID (NCBI):

929

ENSEMBL Gene ID:

ENSG00000170458

UNIPROT ID:

P08571

Full Name:

CD14 molecule

Calculated MW:

375 aa, 40 kDa

Purification Method:

Protein A purification

CloneNo.:

230332D7

Applications

Tested Applications:

FC

Species Specificity:

Human

Background Information

CD14 is a 50-55 kDa glycosylphosphatidylinositol-anchored glycoprotein preferentially expressed on monocytes and macrophages, and at lower levels on granulocytes (PMID: 3385210; 2462937; 7685797). CD14 can also exist as a soluble protein. CD14 acts as a co-receptor for bacterial liposaccharides (LPS) (PMID: 1698311). It plays a major role in the inflammatory response of monocytes to LPS.

Storage

Storage:

Store at 2-8°C. Stable for one year after shipment.

Storage Buffer:

PBS with 0.09% sodium azide.

For technical support and original validation data for this product please contact:

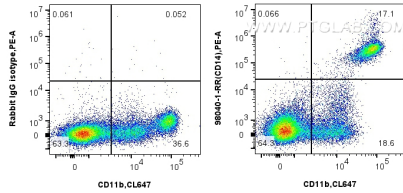
T: 4006900926

E: Proteintech-CN@ptglab.com

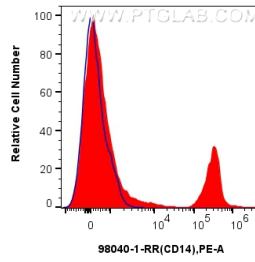
W: ptgcn.com

This product is exclusively available under Proteintech Group brand and is not available to purchase from any other manufacturer.

Selected Validation Data



1x10⁶ human PBMCs were surface stained with 0.25 ug Anti-Human CD14 Rabbit Recombinant Antibody (98040-1-RR, Clone: 230332D7) or 0.25 ug Isotype Control, and PE-conjugated Goat Anti-Rabbit IgG. Cells were then stained with CoraLite® Plus 647 Anti-Human CD11b. Cells were incubated with FC Receptor Block prior to staining. Cells were not fixed.



1x10⁶ human PBMCs were surface stained with 0.25 ug Anti-Human CD14 Rabbit Recombinant Antibody (98040-1-RR, Clone: 230332D7)(red) or 0.25 ug Isotype Control (blue) and PE-conjugated Goat Anti-Rabbit IgG. Cells were incubated with FC Receptor Block prior to staining. Cells were not fixed.