

For Research Use Only

# Anti-Human CD4 Rabbit Recombinant Antibody



Catalog Number: 98042-1-RR

## Basic Information

<b>Catalog Number:</b> 98042-1-RR	<b>GenBank Accession Number:</b> BC025782	<b>Purification Method:</b> Protein A purification
<b>Size:</b> 100ug, 1 mg/ml	<b>GeneID (NCBI):</b> 920	<b>CloneNo.:</b> 240427E12
<b>Source:</b> Rabbit	<b>ENSEMBL Gene ID:</b> ENSG00000010610	
<b>Isotype:</b> IgG	<b>UNIPROT ID:</b> P01730	
	<b>Full Name:</b> CD4 molecule	
	<b>Calculated MW:</b> 55 kDa	

## Applications

**Tested Applications:**  
FC

**Species Specificity:**  
Human

## Background Information

CD4 is a 55-kDa transmembrane glycoprotein expressed on T helper cells, the majority of thymocytes, monocytes, macrophages, and dendritic cells (PMID: 9304802; 12213222). CD4 is an accessory protein for MHC class-II antigen/T-cell receptor interaction. It plays an important role in T helper cell development and activation (PMID: 9539765; 3112582). CD4 serves as a receptor for the human immunodeficiency virus (HIV) (PMID: 9304802).

## Storage

**Storage:**  
Store at 2-8°C. Stable for one year after shipment.

**Storage Buffer:**  
PBS with 0.09% sodium azide.

For technical support and original validation data for this product please contact:

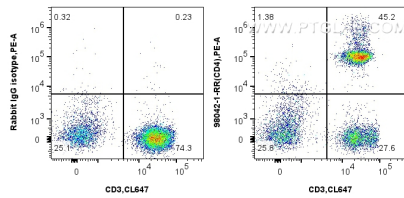
T: 4006900926

E: [Proteintech-CN@ptglab.com](mailto:Proteintech-CN@ptglab.com)

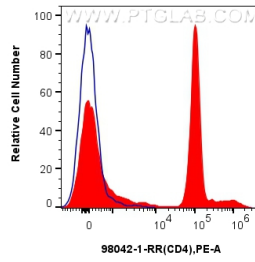
W: [ptgcn.com](http://ptgcn.com)

**This product is exclusively available under Proteintech Group brand and is not available to purchase from any other manufacturer.**

## Selected Validation Data



1x10<sup>6</sup> human PBMCs were surface stained with 0.25 ug Anti-Human CD4 Rabbit Recombinant Antibody (98042-1-RR, Clone: 240427E12) or 0.25 ug Isotype Control and PE-conjugated Goat Anti-Rabbit IgG. Cells were then stained with CoraLite® Plus 647 Anti-Human CD3. Cells were not fixed. Lymphocytes were gated.



1x10<sup>6</sup> human PBMCs were surface stained with 0.25 ug Anti-Human CD4 Rabbit Recombinant Antibody (98042-1-RR, Clone: 240427E12) (red) or 0.25 ug Isotype Control (blue) and PE-conjugated Goat Anti-Rabbit IgG. Cells were not fixed. Lymphocytes were gated.