

For Research Use Only

Anti-Human CD138/Syndecan-1 Rabbit Recombinant Antibody



Catalog Number: 98051-1-RR

Basic Information

Catalog Number: 98051-1-RR	GenBank Accession Number: BC008765	Purification Method: Protein A purification
Size: 100ug, 1000 µg/ml	GeneID (NCBI): 6382	CloneNo.: 240422C4
Source: Rabbit	UNIPROT ID: P18827	
Isotype: IgG	Full Name: syndecan 1	
	Calculated MW: 32.5 kDa	

Applications

Tested Applications:
FC

Species Specificity:
human

Background Information

CD138, also named as Syndecan-1 (SDC1), is an integral membrane protein. It participates in cell proliferation, cell migration and cell-matrix interactions via its receptor for extracellular matrix proteins. It is a heparan sulfate proteoglycan expressed on the surface of, and actively shed by, myeloma cells. Altered syndecan-1 expression has been detected in several different tumor types. CD138 was regarded as a useful marker for labeling normal and neoplastic plasma cells and plasmacytoid lymphomas. CD138 has a calculated molecular weight of 32.5 kDa, the apparent molecular weight is higher due to extensive glycosylation.

Storage

Storage:
Store at 2-8°C. Stable for one year after shipment.

Storage Buffer:
PBS with 0.09% sodium azide, pH 7.3.

For technical support and original validation data for this product please contact:

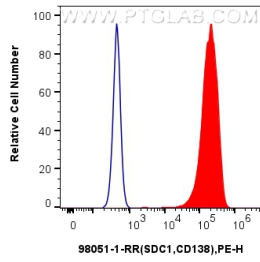
T: 4006900926

E: Proteintech-CN@ptglab.com

W: ptgcn.com

This product is exclusively available under Proteintech Group brand and is not available to purchase from any other manufacturer.

Selected Validation Data



1x10⁶ U266 cells were surface stained with 0.25 ug Anti-Human SDC1,CD138 Rabbit Recombinant Antibody (98051-1-RR, Clone: 240422C4) and PE-Conjugated AffiniPure Goat Anti-Rabbit IgG(H+L) (red), or 0.25 ug Isotype Control and PE-Conjugated AffiniPure Goat Anti-Rabbit IgG(H+L) (blue). Cells were not fixed.