

For Research Use Only

# Anti-Human PD-L1/CD274 Rabbit Recombinant Antibody

Catalog Number: 98062-1-RR



## Basic Information

<b>Catalog Number:</b> 98062-1-RR	<b>GenBank Accession Number:</b> BC074984	<b>Purification Method:</b> Protein A purification
<b>Size:</b> 100ug, 1000 ug/ml	<b>GeneID (NCBI):</b> 29126	<b>CloneNo.:</b> 240721H8
<b>Source:</b> Rabbit	<b>UNIPROT ID:</b> Q9NZQ7	
<b>Isotype:</b> IgG	<b>Full Name:</b> CD274 molecule	
	<b>Calculated MW:</b> 290 aa, 33 kDa	

## Applications

**Tested Applications:**  
FC

**Species Specificity:**  
human

## Background Information

Programmed cell death ligand 1 (PD-L1, CD274, or B7-H1), is the first member of B7 family to be discovered. B7 family molecules are type I transmembrane proteins belonging to the immunoglobulin superfamily. In concert with their CD28 family receptors, the B7s are key regulators of the adaptive immune response. PD-L1 is suggested as a negative regulator of T and B cell, and plays important role in mediating tolerance of lymphocytes to self-antigens. It is also involved in the costimulatory signal, essential for T-cell proliferation and production of IL10 and IFNG, in an IL2-dependent and a PD-1-independent manner.

## Storage

**Storage:**  
Store at 2 - 8°C. Stable for one year after shipment.

**Storage Buffer:**  
PBS with 0.09% sodium azide, pH 7.3.

For technical support and original validation data for this product please contact:

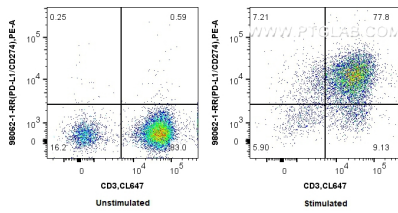
T: 4006900926

E: [Proteintech-CN@ptglab.com](mailto:Proteintech-CN@ptglab.com)

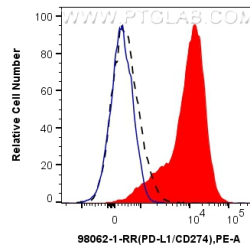
W: [ptgcn.com](http://ptgcn.com)

**This product is exclusively available under Proteintech Group brand and is not available to purchase from any other manufacturer.**

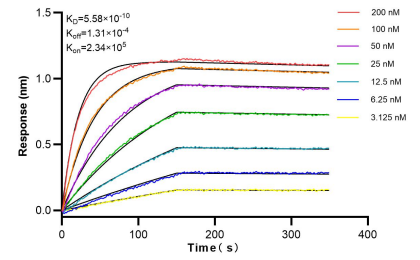
## Selected Validation Data



1x10<sup>6</sup> unstimulated or PHA stimulated human PBMCs were stained with 0.25 ug Anti-Human PD-L1/CD274 Rabbit Recombinant Antibody (98062-1-RR, Clone:240721H8) and PE-Conjugated AffiniPure Goat Anti-Rabbit IgG(H+L), Cells were then stained with CoraLite® Plus 647 Anti-Human CD3 (OKT3) Mouse IgG2a Recombinant Antibody (CL647-65569, Clone: OKT3). Cells were not fixed.



1x10<sup>6</sup> unstimulated (black) or PHA stimulated human PBMCs (red) were stained with 0.25 ug Anti-Human PD-L1/CD274 Rabbit Recombinant Antibody (98062-1-RR, Clone:240721H8) and PE-Conjugated AffiniPure Goat Anti-Rabbit IgG(H+L), 1x10<sup>6</sup> PHA treated human PBMCs were stained with Isotype Control(blue). Cells were not fixed.



Bi-layer interferometry (BLI) kinetic assays of 98062-1-RR against Human PD-L1/CD274 were performed. The affinity constant is 0.558 nM.