

For Research Use Only

Anti-Human LIGHT/CD258 Rabbit Recombinant Antibody

Catalog Number: 98063-1-RR



Basic Information

Catalog Number: 98063-1-RR	GenBank Accession Number: NM_003807	Purification Method: Protein A purification
Size: 100ug, 1000 µg/ml	GeneID (NCBI): 8740	CloneNo.: 240694D7
Source: Rabbit	UNIPROT ID: O43557	
Isotype: IgG	Full Name: tumor necrosis factor (ligand) superfamily, member 14	
	Calculated MW: 26KD	

Applications

Tested Applications:
FC

Species Specificity:
human

Background Information

LIGHT, also known as TNFSF14, HVEM, or CD258, is a type II transmembrane protein that belongs to the TNF superfamily (PMID: 9462508). It is predominantly expressed in lymphoid tissues and produced by activated T cells and immature dendritic cells (DCs) (PMID: 9462508; 10754304). Through its two primary functional receptors HVEM (TNFRSF14) and lymphotoxin β receptor (LT β R), LIGHT signaling is involved in development and maintenance of lymphoid tissues, as well as innate and adaptive immune responses (PMID: 24575096; 26720335). In addition to the membrane form, LIGHT can also exist as a soluble form generated by cleavage of the extracellular portion of the membrane form.

Storage

Storage:
Store at 2 - 8°C. Stable for one year after shipment.

Storage Buffer:
PBS with 0.09% sodium azide, pH 7.3.

For technical support and original validation data for this product please contact:

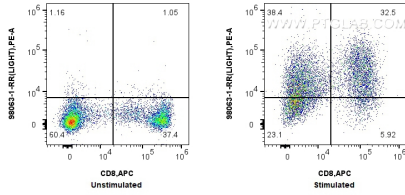
T: 4006900926

E: Proteintech-CN@ptglab.com

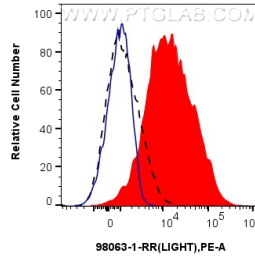
W: ptgcn.com

This product is exclusively available under Proteintech Group brand and is not available to purchase from any other manufacturer.

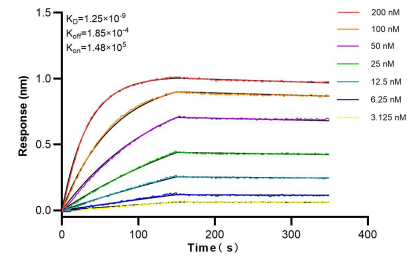
Selected Validation Data



1x10⁶ untreated or PMA, Ionomycin and Brefeldin A treated human PBMCs were stained with 0.25 ug Anti-Human LJGT/CD258 Rabbit Recombinant Antibody (98063-1-RR, Clone:240694D7) and PE-Conjugated AffiniPure Goat Anti-Rabbit IgG (H+L). Cells were then stained with APC Anti-Human CD8a. Cells were not fixed.



1x10⁶ untreated (black) or PMA, Ionomycin and Brefeldin A treated (red) human PBMCs were stained with 0.25 ug Anti-Human LJGT/CD258 Rabbit Recombinant Antibody (98063-1-RR, Clone:240694D7) and PE-Conjugated AffiniPure Goat Anti-Rabbit IgG (H+L), or 0.25 ug Isotype Control (blue). Cells were not fixed.



Bioluminescence resonance energy transfer (BLI) kinetic assays of 98063-1-RR against Human LJGT/CD258 were performed. The affinity constant is 1.25 nM.