

For Research Use Only

# Anti-Human CTLA-4/CD152 Rabbit Recombinant Antibody, PBS Only

Catalog Number: 98078-1-PBS



## Basic Information

Catalog Number:

98078-1-PBS

Size:

1mg, 2 mg/ml

Source:

Rabbit

Isotype:

IgG

GenBank Accession Number:

BC070162

GeneID (NCBI):

1493

UNIPROT ID:

P16410

Full Name:

cytotoxic T-lymphocyte-associated protein 4

Calculated MW:

223 aa, 25 kDa

Purification Method:

Protein A purification

CloneNo.:

240793E8

## Applications

Tested Applications:

FC

Species Specificity:

human

## Background Information

### Storage

Storage:

Store at -80°C.

**The product is shipped with ice packs. Upon receipt, store it immediately at -80°C**

Storage Buffer:

PBS Only

For technical support and original validation data for this product please contact:

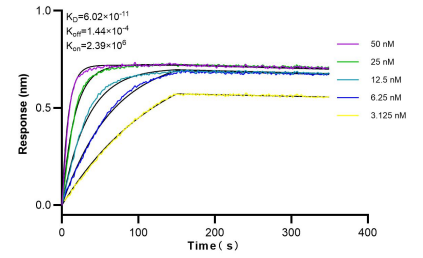
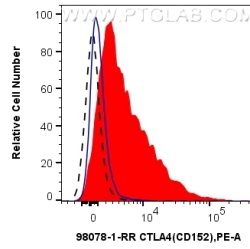
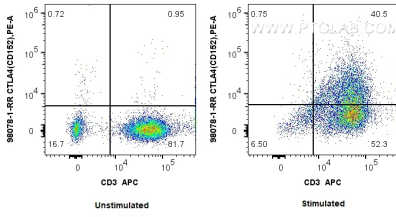
T: 4006900926

E: [Proteintech-CN@ptglab.com](mailto:Proteintech-CN@ptglab.com)

W: [ptgcn.com](http://ptgcn.com)

**This product is exclusively available under Proteintech Group brand and is not available to purchase from any other manufacturer.**

## Selected Validation Data



1x10<sup>6</sup> PHA stimulated human PBMCs were surface stained with 0.25 ug Anti-Human CTLA4 Rabbit Recombinant Antibody (98078-1-RR, Clone:240793E8), or 1x10<sup>6</sup> unstimulated human PBMCs were surface stained with 0.25 ug Anti-Human CTLA4 Rabbit Recombinant Antibody (98078-1-RR, Clone:240793E8) and PE-Conjugated AffiniPure Goat Anti-Rabbit IgG(H+L). Cells were then stained with APC Anti-Human CD3. Cells were not fixed. This data was developed

1x10<sup>6</sup> PHA stimulated human PBMCs were surface stained with 0.25 ug Anti-Human CTLA4 Rabbit Recombinant Antibody (98078-1-RR, Clone:240793E8)(red), or Isotype Control(blue), or 1x10<sup>6</sup> unstimulated human PBMCs were surface stained with 0.25 ug Anti-Human CTLA4 Rabbit Recombinant Antibody (98078-1-RR, Clone:240793E8)(black) and PE-Conjugated AffiniPure Goat Anti-Rabbit IgG(H+L). Cells were not fixed. This data was developed using the same antibody clone

Bi-layer interferometry (BLI) kinetic assays of 98078-1-RR against Human CTLA4/CD152 were performed. The affinity constant is 60.2 pM.