

For Research Use Only

Anti-Human CTLA-4/CD152 Rabbit Recombinant Antibody

Catalog Number: 98078-1-RR



Basic Information

Catalog Number: 98078-1-RR	GenBank Accession Number: BC070162	Purification Method: Protein A purification
Size: 100ug, 1000 ug/ml	GeneID (NCBI): 1493	CloneNo.: 240793E8
Source: Rabbit	UNIPROT ID: P16410	
Isotype: IgG	Full Name: cytotoxic T-lymphocyte-associated protein 4	
	Calculated MW: 223 aa, 25 kDa	

Applications

Tested Applications:
FC

Species Specificity:
human

Background Information

Storage

Storage:
Store at 2 - 8°C. Stable for one year after shipment.

Storage Buffer:
PBS with 0.09% sodium azide, pH 7.3.

For technical support and original validation data for this product please contact:

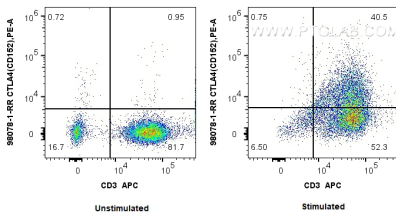
T: 4006900926

E: Proteintech-CN@ptglab.com

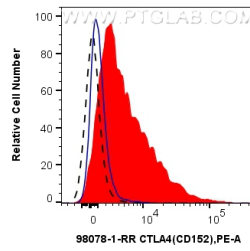
W: ptgcn.com

This product is exclusively available under Proteintech Group brand and is not available to purchase from any other manufacturer.

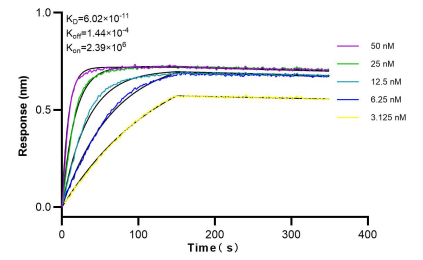
Selected Validation Data



1x10⁶ PHA stimulated human PBMCs were surface stained with 0.25 ug Anti-Human CTLA4 Rabbit Recombinant Antibody (98078-1-RR, Clone:240793E8) , or 1x10⁶ unstimulated human PBMCs were surface stained with 0.25 ug Anti-Human CTLA4 Rabbit Recombinant Antibody (98078-1-RR, Clone:240793E8) and PE-Conjugated AffiniPure Goat Anti-Rabbit IgG(H+L). Cells were then stained with APC Anti-Human CD3. Cells were not fixed.



1x10⁶ PHA stimulated human PBMCs were surface stained with 0.25 ug Anti-Human CTLA4 Rabbit Recombinant Antibody (98078-1-RR, Clone:240793E8)(red), or Isotype Control(blue), or 1x10⁶ unstimulated human PBMCs were surface stained with 0.25 ug Anti-Human CTLA4 Rabbit Recombinant Antibody (98078-1-RR, Clone:240793E8)(black) and PE-Conjugated AffiniPure Goat Anti-Rabbit IgG(H+L) . Cells were not fixed.



Bi-layer interferometry (BLI) kinetic assays of 98078-1-RR against Human CTLA4/CD152 were performed. The affinity constant is 60.2 pM.