

For Research Use Only

Anti-Human CD23 Rabbit Recombinant Antibody, PBS Only

Catalog Number: 98088-1-PBS



Basic Information

Catalog Number: 98088-1-PBS	GenBank Accession Number: BC064417	Purification Method: Protein A purification
Size: 1mg, 2mg/ml	GeneID (NCBI): 2208	CloneNo.: 241270C6
Source: Rabbit	UNIPROT ID: P06734	
Isotype: IgG	Full Name: Fc fragment of IgE, low affinity II, receptor for (CD23)	
	Calculated MW: 321 aa, 36 kDa	

Applications

Tested Applications:
FC

Species Specificity:
human

Background Information

CD23, also known as low affinity immunoglobulin epsilon Fc receptor, is a transmembrane glycoprotein present on a subpopulation of B lymphocytes in germinal centres, EBV-transformed B-lymphoblastoid cell lines, follicular dendritic cells, and a subpopulation of peripheral blood cells. CD23 has essential roles in the regulation of IgE production and in the differentiation of B-cells.

Storage

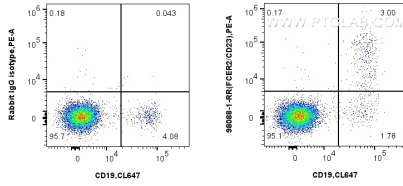
Storage:
Store at -80°C.
The product is shipped with ice packs. Upon receipt, store it immediately at -80°C

Storage Buffer:
PBS Only

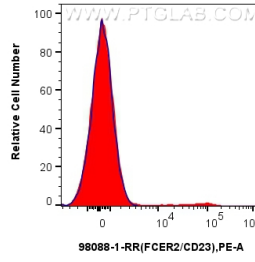
For technical support and original validation data for this product please contact:
T: 4006900926 E: Proteintech-CN@ptglab.com W: ptgcn.com

This product is exclusively available under Proteintech Group brand and is not available to purchase from any other manufacturer.

Selected Validation Data



1x10⁶ human PBMCs were surface stained with 0.25 ug Anti-Human CD23 Rabbit Recombinant Antibody (98088-1-RR, Clone:241270C6) or Isotype Control and PE-conjugated Goat Anti-Rabbit IgG. Cells were then stained with CoraLite® Plus 647 Anti-Human CD19 (4G7). Cells were not fixed. Lymphocytes were gated. This data was developed using the same antibody clone with 98088-1-PBS in a different storage buffer formulation.



1x10⁶ human PBMCs were surface stained with 0.25 ug Anti-Human CD23 Rabbit Recombinant Antibody (98088-1-RR, Clone:241270C6) (red) or Isotype Control (blue) and PE-conjugated Goat Anti-Rabbit IgG. Cells were not fixed. Lymphocytes were gated. This data was developed using the same antibody clone with 98088-1-PBS in a different storage buffer formulation.