

For Research Use Only

# Anti-Human CD22 Rabbit Recombinant Antibody, PBS Only

Catalog Number: 98092-1-PBS



## Basic Information

<b>Catalog Number:</b> 98092-1-PBS	<b>GenBank Accession Number:</b> BC109306	<b>Purification Method:</b> Protein A purification
<b>Size:</b> 1mg, 2mg/ml	<b>GeneID (NCBI):</b> 933	<b>CloneNo.:</b> 241315A1
<b>Source:</b> Rabbit	<b>UNIPROT ID:</b> P20273	
<b>Isotype:</b> IgG	<b>Full Name:</b> CD22 molecule	
	<b>Calculated MW:</b> 847 aa, 95 kDa	

## Applications

**Tested Applications:**  
FC

**Species Specificity:**  
human

## Background Information

CD22, also known as Siglec-2 (sialic acid binding Ig-like lectin 2) or BL-CAM (B-lymphocyte cell adhesion molecule), is a 130-140 kDa, B-cell restricted, type I transmembrane glycoprotein belonging to the immunoglobulin gene superfamily. The expression of CD22 is developmentally regulated. It is expressed at low levels in the cytoplasm of pro-B and pre-B cells and present on the cell surface only at mature stages of B-cell differentiation. Cell surface expression is lost during terminal differentiation into plasma cell and after B-cell activation. CD22 is an inhibitory receptor for B-cell receptor (BCR) signalling, preferentially binds to alpha-2,6-linked sialic acid and mediates B-cell B-cell interactions. It plays a crucial role in activation and differentiation of the B-cell.

## Storage

**Storage:**  
Store at -80°C.  
**The product is shipped with ice packs. Upon receipt, store it immediately at -80°C**

**Storage Buffer:**  
PBS Only

For technical support and original validation data for this product please contact:

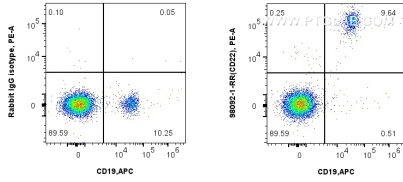
T: 4006900926

E: [Proteintech-CN@ptglab.com](mailto:Proteintech-CN@ptglab.com)

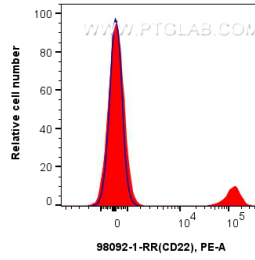
W: [ptgcn.com](http://ptgcn.com)

**This product is exclusively available under Proteintech Group brand and is not available to purchase from any other manufacturer.**

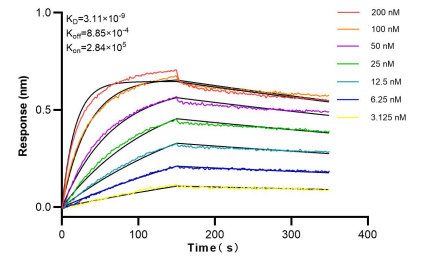
## Selected Validation Data



1x10<sup>6</sup> human PBMCs were surface stained with 0.25 ug Anti-Human CD22 Rabbit Recombinant Antibody (98092-1-RR, Clone:241315A1) or Isotype Control and PE-conjugated Goat Anti-Rabbit IgG. Cells were then stained with CoraLite® Plus 647 Anti-Human CD19 (4G7) Mouse IgG2a Recombinant Antibody (CL647-65562, Clone: 4G7). Cells were not fixed. This data was developed using the same antibody clone with 98092-1-PBS in a different storage buffer formulation.



1x10<sup>6</sup> human PBMCs were surface stained with 0.25 ug Anti-Human CD22 Rabbit Recombinant Antibody (98092-1-RR, Clone:241315A1) or Isotype Control and PE-conjugated Goat Anti-Rabbit IgG. Cells were not fixed. This data was developed using the same antibody clone with 98092-1-PBS in a different storage buffer formulation.



Bi-layer interferometry (BLI) kinetic assays of 98092-1-RR against Human CD22 were performed. The affinity constant is 3.11 nM.