

For Research Use Only

Anti-Human SLAMF7/CD319 Rabbit Recombinant Antibody, PBS Only

Catalog Number: 98093-1-PBS



Basic Information

Catalog Number:

98093-1-PBS

Size:

1mg, 2 mg/ml

Source:

Rabbit

Isotype:

IgG

GenBank Accession Number:

BC027867

GeneID (NCBI):

57823

UNIPROT ID:

Q9NQ25

Full Name:

SLAM family member 7

Calculated MW:

335 aa, 37 kDa

Purification Method:

Protein A purification

CloneNo.:

241321F11

Applications

Tested Applications:

FC

Species Specificity:

human

Background Information

Signaling lymphocyte activation molecule (SLAM) family receptors is a group of type I transmembrane receptors belonging to the immunoglobulin superfamily (PMID: 37251372). The SLAM family contains nine members that contain an extracellular segment comprising two or four Ig-like domains (V-like variable and C2-like constant), a transmembrane region and a cytoplasmic tail (PMID: 29662641). They are involved in various physiological and pathological processes, including the regulation of immunological responses and the route of viral entry. SLAMF7, also known as CS1, CRACC or CD319, is expressed on NK cells, CD8+ T lymphocytes, B lymphocytes, and mature dendritic cells (PMID: 28861320). It exerts both activating and inhibitory effects depending on the expression status of SAP or EAT-2. SLAMF7 is overexpressed in multiple myeloma and makes it a target for immunotherapy (PMID: 28861320).

Storage

Storage:

Store at -80°C.

The product is shipped with ice packs. Upon receipt, store it immediately at -80°C

Storage Buffer:

PBS Only

For technical support and original validation data for this product please contact:

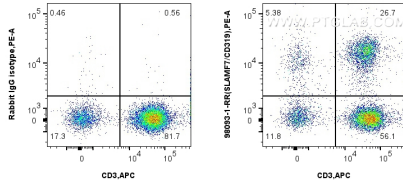
T: 4006900926

E: Proteintech-CN@ptglab.com

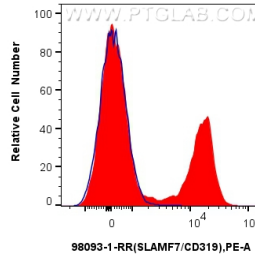
W: ptgcn.com

This product is exclusively available under Proteintech Group brand and is not available to purchase from any other manufacturer.

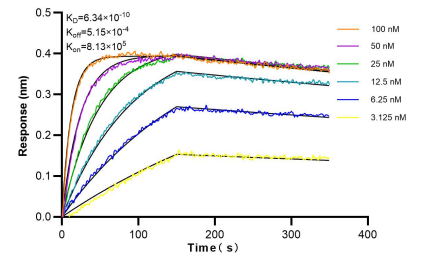
Selected Validation Data



1x10⁶ human PBMCs were surface stained with 0.25 ug Anti-Human SLAMF7/CD319 Rabbit Recombinant Antibody (98093-1-RR, Clone:241321F11) or 0.25 ug Isotype Control, and PE-Conjugated Goat Anti-Rabbit IgG(H+L). Cells were then stained with APC Anti-Human CD3. Cells were not fixed. Lymphocytes were gated. This data was developed using the same antibody clone with 98093-1-PBS in a different storage buffer formulation.



1x10⁶ human PBMCs were surface stained with 0.25 ug Anti-Human SLAMF7/CD319 Rabbit Recombinant Antibody (98093-1-RR, Clone:241321F11) (red) or 0.25 ug Isotype Control (blue), and PE-Conjugated Goat Anti-Rabbit IgG(H+L). Cells were not fixed. Lymphocytes were gated. This data was developed using the same antibody clone with 98093-1-PBS in a different storage buffer formulation.



Bi-layer interferometry (BLI) kinetic assays of 98093-1-RR against Human SLAMF7/CD319 were performed. The affinity constant is 0.634 nM.