

For Research Use Only

Anti-Human BTLA/CD272 Rabbit Recombinant Antibody, PBS Only

Catalog Number: 98096-1-PBS



Basic Information

Catalog Number:

98096-1-PBS

Size:

1mg, 2mg/ml

Source:

Rabbit

Isotype:

IgG

GenBank Accession Number:

BC107091

GeneID (NCBI):

151888

UNIPROT ID:

Q7Z6A9

Full Name:

B and T Lymphocyte associated

Calculated MW:

289 aa, 33 kDa

Purification Method:

Protein A purification

CloneNo.:

241318H5

Applications

Tested Applications:

FC, Cytometric bead array, Indirect ELISA

Species Specificity:

human

Background Information

Storage

Storage:

Store at -80°C.

The product is shipped with ice packs. Upon receipt, store it immediately at -80°C

Storage Buffer:

PBS Only

For technical support and original validation data for this product please contact:

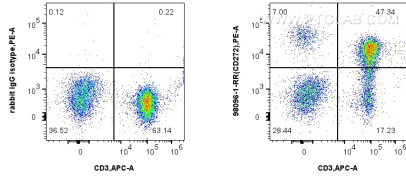
T: 4006900926

E: Proteintech-CN@ptglab.com

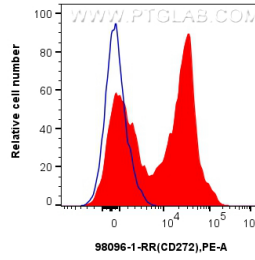
W: ptgcn.com

This product is exclusively available under Proteintech Group brand and is not available to purchase from any other manufacturer.

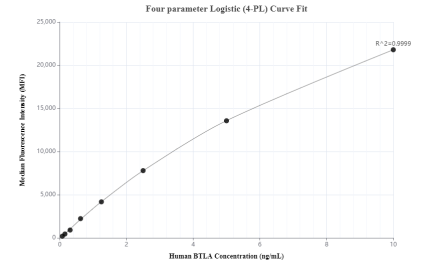
Selected Validation Data



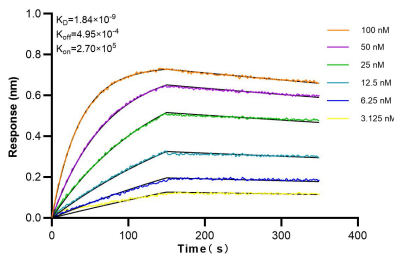
1x10⁶ human PBMCs were surface stained with 0.25 ug Anti-Human BTLA/CD272 Rabbit Recombinant Antibody (98096-1-RR, Clone: 241318H5) or Isotype Control and PE-conjugated Goat Anti-Rabbit IgG. Cells were co-stained with APC Anti-Human CD8 (UCHT4) Mouse IgG2a Recombinant Antibody (APC-65559, Clone: UCHT4). Cells were incubated with FC Receptor Block prior to staining. Cells were not fixed. Lymphocytes were gated. This data was developed using



1x10⁶ human PBMCs were surface stained with 0.25 ug Anti-Human BTLA/CD272 Rabbit Recombinant Antibody (98096-1-RR, Clone: 241318H5) or Isotype Control and PE-conjugated Goat Anti-Rabbit IgG. Cells were incubated with FC Receptor Block prior to staining. Cells were not fixed. Lymphocytes were gated. This data was developed using the same antibody clone with 98096-1-PBS in a different storage buffer formulation.



Cytometric bead array standard curve of MP01168-2, BTLA/CD272 Recombinant Matched Antibody Pair, PBS Only. Capture antibody: 98096-1-PBS. Detection antibody: 84262-2-PBS. Standard: RP02326. Range: 0.078-10 ng/mL



Biolayer interferometry (BLI) kinetic assays of 98096-1-RR against Human BTLA/CD272 were performed. The affinity constant is 1.84 nM.