

For Research Use Only

# Anti-Human ICAM3/CD50 Rabbit Recombinant Antibody, PBS Only

Catalog Number: 98097-1-PBS



## Basic Information

<b>Catalog Number:</b> 98097-1-PBS	<b>GenBank Accession Number:</b> BC058903	<b>Purification Method:</b> Protein A purification
<b>Size:</b> 1mg, 2mg/ml	<b>GeneID (NCBI):</b> 3385	<b>CloneNo.:</b> 241418E8
<b>Source:</b> Rabbit	<b>UNIPROT ID:</b> P32942	
<b>Isotype:</b> IgG	<b>Full Name:</b> intercellular adhesion molecule 3	
	<b>Calculated MW:</b> 547 aa, 60 kDa	

## Applications

**Tested Applications:**  
FC, Cytometric bead array, Indirect ELISA

**Species Specificity:**  
human

## Background Information

### Storage

**Storage:**  
Store at -80°C.  
**The product is shipped with ice packs. Upon receipt, store it immediately at -80°C**

**Storage Buffer:**  
PBS Only

For technical support and original validation data for this product please contact:

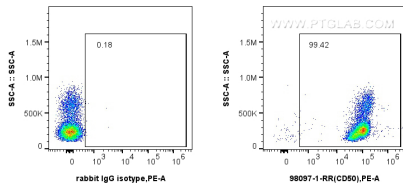
T: 4006900926

E: [Proteintech-CN@ptglab.com](mailto:Proteintech-CN@ptglab.com)

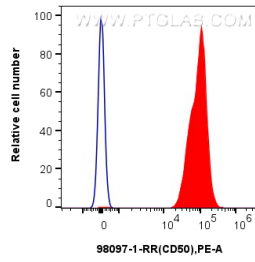
W: [ptgcn.com](http://ptgcn.com)

**This product is exclusively available under Proteintech Group brand and is not available to purchase from any other manufacturer.**

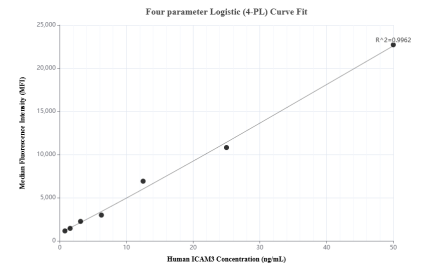
## Selected Validation Data



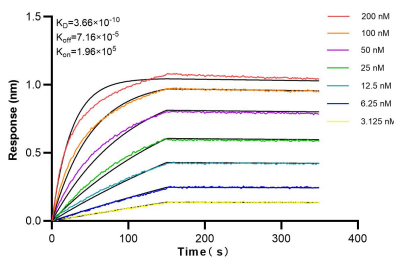
1x10<sup>6</sup> human PBMCs were surface stained with 0.25 ug Anti-Human ICAM3/CD50 Rabbit Recombinant Antibody (98097-1-RR, Clone:241418E8) or Isotype Control and PE-conjugated Goat Anti-Rabbit IgG. Cells were incubated with FC Receptor Block prior to staining. Cells were not fixed. This data was developed using the same antibody clone with 98097-1-PBS in a different storage buffer formulation.



1x10<sup>6</sup> human PBMCs were surface stained with 0.25 ug Anti-Human ICAM3/CD50 Rabbit Recombinant Antibody (98097-1-RR, Clone:241418E8) or Isotype Control and PE-conjugated Goat Anti-Rabbit IgG. Cells were incubated with FC Receptor Block prior to staining. Cells were not fixed. This data was developed using the same antibody clone with 98097-1-PBS in a different storage buffer formulation.



Cytometric bead array standard curve of MP01223-1, ICAM3 Recombinant Matched Antibody Pair, PBS Only. Capture antibody: 98097-1-PBS. Detection antibody: 84335-3-PBS. Standard: RP02342. Range: 0.781-50 ng/mL.



Biolayer interferometry (BLI) kinetic assays of 98097-1-RR against Human ICAM3/CD50 were performed. The affinity constant is 0,366 nM.