

For Research Use Only

Anti-Human CD39/ENTPD1 Rabbit Recombinant Antibody, PBS Only

Catalog Number: 98102-1-PBS



Basic Information

Catalog Number: 98102-1-PBS	GenBank Accession Number: BC047664	Purification Method: Protein A purification
Size: 1mg, 2mg/ml	GeneID (NCBI): 953	CloneNo.: 241292G7
Source: Rabbit	UNIPROT ID: P49961	
Isotype: IgG	Full Name: ectonucleoside triphosphate diphosphohydrolase 1	
	Calculated MW: 58 kDa	

Applications

Tested Applications:
FC, Cytometric bead array, Indirect ELISA

Species Specificity:
human

Background Information

ENTPD1 (Ectonucleoside triphosphate diphosphohydrolase 1) is also named CD39, NTPDase 1, and Ecto-ATPDase 1 and belongs to the GDA1/CD39 NTPase family. In the nervous system, it can hydrolyze ATP and other nucleotides to regulate purinergic neurotransmission. It is a noncovalent tetrameric protein and detergent inhibition of enzymatic activity is caused by dissociation of ectoapyrase tetramers into monomers (PMID: 9733785).

Storage

Storage:
Store at -80°C.
The product is shipped with ice packs. Upon receipt, store it immediately at -80°C
Storage Buffer:
PBS Only

For technical support and original validation data for this product please contact:

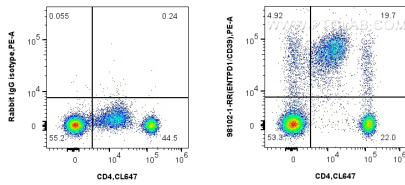
T: 4006900926

E: Proteintech-CN@ptglab.com

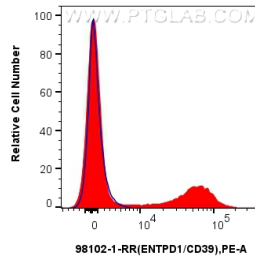
W: ptgcn.com

This product is exclusively available under Proteintech Group brand and is not available to purchase from any other manufacturer.

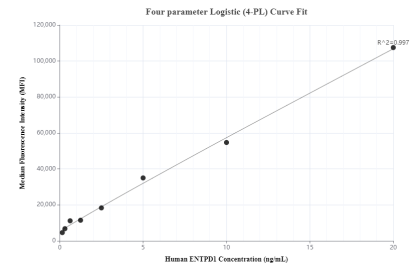
Selected Validation Data



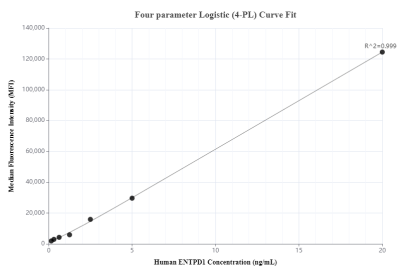
1x10⁶ human PBMCs were surface stained with 0.25 ug Anti-Human CD39/ENTPD1 Rabbit Recombinant Antibody (98102-1-RR, Clone: 241292G7) or Isotype Control, and PE-Conjugated AffiniPure Goat Anti-Rabbit IgG(H+L). Cells were co-stained with CoraLite® Plus 647 Anti-Human CD4 (OKT4). Cells were incubated with FC Receptor Block prior to staining. Cells were not fixed. This data was developed using the same antibody clone with 98102-1-PBS in a different storage



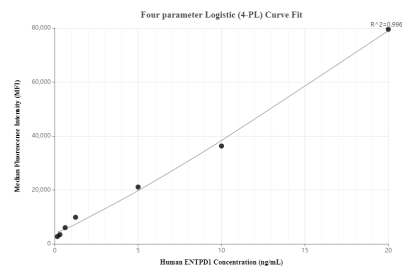
1x10⁶ human PBMCs were surface stained with 0.25 ug Anti-Human CD39/ENTPD1 Rabbit Recombinant Antibody (98102-1-RR, Clone: 241292G7) or Isotype Control, and PE-Conjugated AffiniPure Goat Anti-Rabbit IgG(H+L). Cells were incubated with FC Receptor Block prior to staining. Cells were not fixed. This data was developed using the same antibody clone with 98102-1-PBS in a different storage buffer formulation.



Cytometric bead array standard curve of MP01143-1, ENTPD1/CD39 Recombinant Matched Antibody Pair, PBS Only. Capture antibody: 98102-1-PBS. Detection antibody: 84235-2-PBS. Standard: RP02313. Range: 0.156-20 ng/mL



Cytometric bead array standard curve of MP01143-2, ENTPD1/CD39 Recombinant Matched Antibody Pair, PBS Only. Capture antibody: 98102-1-PBS. Detection antibody: 84235-1-PBS. Standard: RP02313. Range: 0.156-20 ng/mL



Cytometric bead array standard curve of MP01143-3, ENTPD1/CD39 Recombinant Matched Antibody Pair, PBS Only. Capture antibody: 84235-3-PBS. Detection antibody: 98102-1-PBS. Standard: RP02313. Range: 0.156-20 ng/mL