

For Research Use Only

Anti-Human CD39/ENTPD1 Rabbit Recombinant Antibody

Catalog Number: 98102-1-RR



Basic Information

Catalog Number: 98102-1-RR	GenBank Accession Number: BC047664	Purification Method: Protein A purification
Size: 100ug, 1000 µg/ml	GeneID (NCBI): 953	CloneNo.: 241292G7
Source: Rabbit	UNIPROT ID: P49961	
Isotype: IgG	Full Name: ectonucleoside triphosphate diphosphohydrolase 1	
	Calculated MW: 58 kDa	

Applications

Tested Applications:
FC

Species Specificity:
human

Background Information

ENTPD1 (Ectonucleoside triphosphate diphosphohydrolase 1) is also named CD39, NTPDase 1, and Ecto-ATPDase 1 and belongs to the GDA1/CD39 NTPase family. In the nervous system, it can hydrolyze ATP and other nucleotides to regulate purinergic neurotransmission. It is a noncovalent tetrameric protein and detergent inhibition of enzymatic activity is caused by dissociation of ectoapyrase tetramers into monomers (PMID: 9733785).

Storage

Storage:
Store at 2 - 8°C. Stable for one year after shipment.

Storage Buffer:
PBS with 0.09% sodium azide, pH 7.3.

For technical support and original validation data for this product please contact:

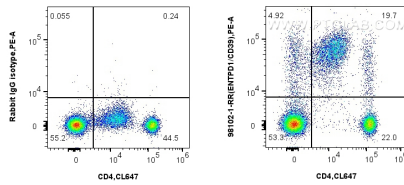
T: 4006900926

E: Proteintech-CN@ptglab.com

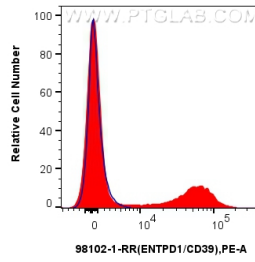
W: ptgcn.com

This product is exclusively available under Proteintech Group brand and is not available to purchase from any other manufacturer.

Selected Validation Data



1x10⁶ human PBMCs were surface stained with 0.25 ug Anti-Human CD39/ENTPD1 Rabbit Recombinant Antibody (98102-1-RR, Clone: 241292G7) or Isotype Control, and PE-Conjugated AffiniPure Goat Anti-Rabbit IgG(H+L). Cells were co-stained with CoraLite® Plus 647 Anti-Human CD4 (OKT4). Cells were incubated with FC Receptor Block prior to staining. Cells were not fixed.



1x10⁶ human PBMCs were surface stained with 0.25 ug Anti-Human CD39/ENTPD1 Rabbit Recombinant Antibody (98102-1-RR, Clone: 241292G7) or Isotype Control, and PE-Conjugated AffiniPure Goat Anti-Rabbit IgG(H+L). Cells were incubated with FC Receptor Block prior to staining. Cells were not fixed.