

For Research Use Only

Anti-Human CD8b Rabbit Recombinant Antibody

Catalog Number: 98103-1-RR



Basic Information

Catalog Number: 98103-1-RR	GenBank Accession Number: BC100913	Purification Method: Protein A purification
Size: 100ug, 1000 ug/ml	GeneID (NCBI): 926	CloneNo.: 241326A7
Source: Rabbit	UNIPROT ID: P10966	
Isotype: IgG	Full Name: CD8b molecule	
	Calculated MW: 243 aa, 27 kDa	

Applications

Tested Applications:
FC

Species Specificity:
human

Background Information

CD8b (T-cell surface glycoprotein CD8 beta chain) is an integral membrane glycoprotein that forms disulfide-linked heterodimers with CD8a (CD8 alpha chain). The CD8 alpha/beta heterodimer is the predominant CD8 complex expressed on the cell surface (PMID: 1534146; 2111591). CD8 is a transmembrane glycoprotein predominantly expressed on the surface of cytotoxic T cells and can also be found on natural killer cells, cortical thymocytes, and dendritic cells. CD8 serves as a co-receptor for the T cell receptor (TCR). Both CD8 and TCR recognize antigens displayed by an antigen presenting cell (APC) in the context of class I MHC molecules. CD8 plays a role in T cell development and activation of mature T cells.

Storage

Storage:
Store at 2 - 8°C. Stable for one year after shipment.

Storage Buffer:
PBS with 0.09% sodium azide, pH 7.3.

For technical support and original validation data for this product please contact:

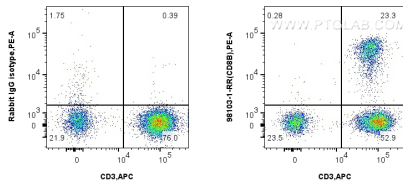
T: 4006900926

E: Proteintech-CN@ptglab.com

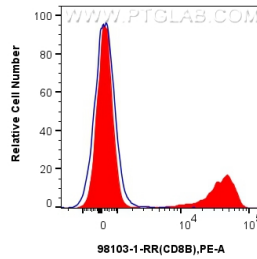
W: ptgcn.com

This product is exclusively available under Proteintech Group brand and is not available to purchase from any other manufacturer.

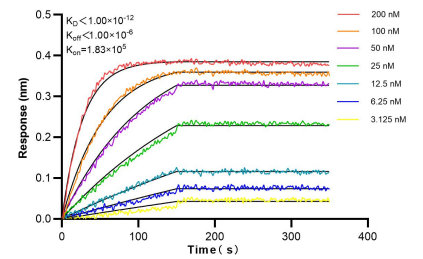
Selected Validation Data



1x10⁶ human PBMCs were surface stained with 0.25 ug Anti-Human CD8b Rabbit Recombinant Antibody (98103-1-RR, Clone: 241326A7) or Isotype Control, and PE-Conjugated Goat Anti-Rabbit IgG(H+L). Cells were co-stained with APC Anti-Human CD3. Cells were not fixed.



1x10⁶ human PBMCs were surface stained with 0.25 ug Anti-Human CD8b Rabbit Recombinant Antibody (98103-1-RR, Clone: 241326A7)(red), or Isotype Control (blue) and PE-Conjugated Goat Anti-Rabbit IgG(H+L). Cells were not fixed.



Bi-layer interferometry (BLI) kinetic assays of 98103-1-RR against Human CD8b were performed. The affinity constant is below 1 pM.