

For Research Use Only

# Anti-Human CD84 Rabbit Recombinant Antibody, PBS Only

Catalog Number: 98108-1-PBS



## Basic Information

Catalog Number:

98108-1-PBS

Size:

1mg, 2mg/ml

Source:

Rabbit

Isotype:

IgG

GenBank Accession Number:

BC020063

GeneID (NCBI):

8832

UNIPROT ID:

Q9UIB8

Full Name:

CD84 molecule

Calculated MW:

345 aa, 39 kDa

Purification Method:

Protein A purification

CloneNo.:

241345A3

## Applications

Tested Applications:

FC, Cytometric bead array, Indirect ELISA

Species Specificity:

human

## Background Information

CD84, also known as SLAMF5, is a member of the CD2 subfamily of the immunoglobulin receptor superfamily (PMID: 9310491). CD84 is a single-chain type-I glycoprotein composed of two extracellular Ig-like domains, a hydrophobic transmembrane region, and a cytoplasmic domain. It is broadly expressed on almost all leukocyte subsets. CD84 functions as a homophilic adhesion molecule, whose signaling can activate or inhibit leukocyte function depending on the cell type and its stage of activation or differentiation (PMID: 30522694).

## Storage

Storage:

Store at -80°C.

**The product is shipped with ice packs. Upon receipt, store it immediately at -80°C**

Storage Buffer:

PBS Only

For technical support and original validation data for this product please contact:

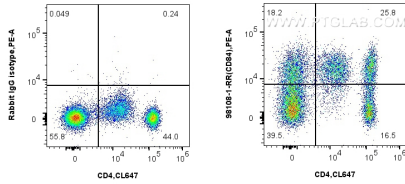
T: 4006900926

E: [Proteintech-CN@ptglab.com](mailto:Proteintech-CN@ptglab.com)

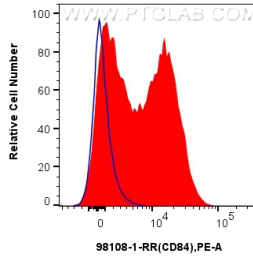
W: [ptgcn.com](http://ptgcn.com)

**This product is exclusively available under Proteintech Group brand and is not available to purchase from any other manufacturer.**

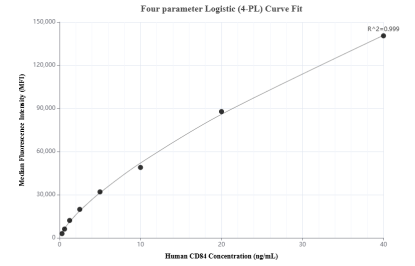
## Selected Validation Data



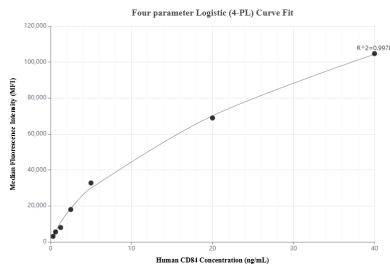
1x10<sup>6</sup> human PBMCs were surface stained with 0.25 ug Anti-Human CD84 Rabbit Recombinant Antibody (98108-1-RR, Clone: 241345A3) or Isotype Control, and PE-Conjugated AffiniPure Goat Anti-Rabbit IgG(H+L). Cells were then stained with CoraLite® Plus 647 Anti-Human CD4 (OKT4). Cells were incubated with FC Receptor Block prior to staining. Cells were not fixed. This data was developed using the same antibody clone with 98108-1-PBS in a different storage



1x10<sup>6</sup> human PBMCs were surface stained with 0.25 ug Anti-Human CD84 Rabbit Recombinant Antibody (98108-1-RR, Clone: 241345A3) or Isotype Control, and PE-Conjugated AffiniPure Goat Anti-Rabbit IgG(H+L). Cells were incubated with FC Receptor Block prior to staining. Cells were not fixed. This data was developed using the same antibody clone with 98108-1-PBS in a different storage buffer formulation.



Cytometric bead array standard curve of MP0112-1, CD84 Recombinant Matched Antibody Pair, PBS Only. Capture antibody: 98108-1-PBS. Detection antibody: 84245-2-PBS. Standard: RP02347. Range: 0.313-40 ng/mL



Cytometric bead array standard curve of MP0112-2, CD84 Recombinant Matched Antibody Pair, PBS Only. Capture antibody: 84245-1-PBS. Detection antibody: 98108-1-PBS. Standard: RP02347. Range: 0.313-40 ng/mL