

For Research Use Only

# Anti-Human VISTA Rabbit Recombinant Antibody, PBS Only

Catalog Number: 98109-1-PBS



## Basic Information

<b>Catalog Number:</b> 98109-1-PBS	<b>GenBank Accession Number:</b> BC020568	<b>Purification Method:</b> Protein A purification
<b>Size:</b> 1mg, 2mg/ml	<b>GeneID (NCBI):</b> 64115	<b>CloneNo.:</b> 241003C8
<b>Source:</b> Rabbit	<b>UNIPROT ID:</b> Q9H7M9	
<b>Isotype:</b> IgG	<b>Full Name:</b> chromosome 10 open reading frame 54	
	<b>Calculated MW:</b> 311 aa, 34 kDa	

## Applications

**Tested Applications:**  
FC

**Species Specificity:**  
human

## Background Information

VISTA, also known as platelet receptor G124, B7-H5, C10orf54, Dies1, PD-1H, and SISP1, is a member of the immunoglobulin superfamily. It serves not only as a positive regulator but also as a substrate of MT1-MMP and contributes at least in part to tumor invasion.

## Storage

**Storage:**  
Store at -80°C.  
**The product is shipped with ice packs. Upon receipt, store it immediately at -80°C**

**Storage Buffer:**  
PBS Only

For technical support and original validation data for this product please contact:

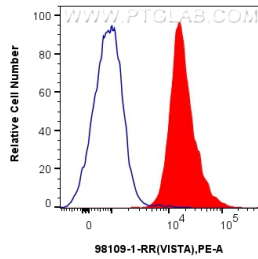
T: 4006900926

E: [Proteintech-CN@ptglab.com](mailto:Proteintech-CN@ptglab.com)

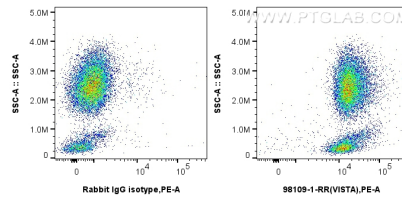
W: [ptgcn.com](http://ptgcn.com)

**This product is exclusively available under Proteintech Group brand and is not available to purchase from any other manufacturer.**

## Selected Validation Data



$1 \times 10^6$  human peripheral blood leukocytes were surface stained with 0.25 ug Anti-Human VISTA Rabbit Recombinant Antibody (98109-1-RR, Clone:241003C8) (red) or Isotype Control (blue) and PE-conjugated Goat Anti-Rabbit IgG. Cells were incubated with FC Receptor Block prior to staining. Cells were not fixed. This data was developed using the same antibody clone with 98109-1-PBS in a different storage buffer formulation.



$1 \times 10^6$  human peripheral blood leukocytes were surface stained with 0.25 ug Anti-Human VISTA Rabbit Recombinant Antibody (98109-1-RR, Clone:241003C8) or Isotype Control and PE-conjugated Goat Anti-Rabbit IgG. Cells were incubated with FC Receptor Block prior to staining. Cells were not fixed. This data was developed using the same antibody clone with 98109-1-PBS in a different storage buffer formulation.