

For Research Use Only

Anti-Human MICA/MICB Rabbit Recombinant Antibody

Catalog Number: 98110-1-RR



Basic Information

Catalog Number: 98110-1-RR	GenBank Accession Number: AAH16929.1	Purification Method: Protein A purification
Size: 100ug, 1000 μ g/ml	GeneID (NCBI): 4276	CloneNo.: 240735D5
Source: Rabbit	Full Name: MHC class I polypeptide-related sequence A	
Isotype: IgG	Calculated MW: 43 kDa	

Applications

Tested Applications:
FC

Species Specificity:
human

Background Information

Human MHC class I chain-related genes located within the HLA class I region of chromosome 6 encode MHC class I chain-related A and B (MICA and MICB) (PMID: 11429322). MICA and MICB are stress-inducible surface molecules that are not associated with β 2-microglobulin and do not present peptides (PMID: 9497295). They are expressed in intestinal epithelium and many epithelial tumors (PMID: 10359807). MICA and MICB are ligands for NKG2D which is an activating receptor that is expressed on most natural killer (NK) cells, CD8 α β T cells, and γ δ T cells (PMID: 10426993; 11491531). This antibody recognizes both MICA and MICB.

Storage

Storage:
Store at 2 - 8°C. Stable for one year after shipment.
Storage Buffer:
PBS with 0.09% sodium azide, pH 7.3.

For technical support and original validation data for this product please contact:

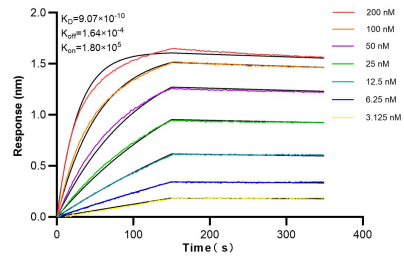
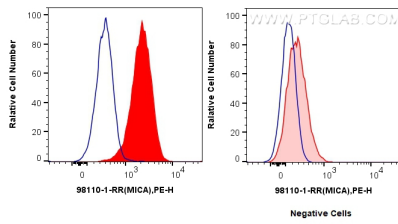
T: 4006900926

E: Proteintech-CN@ptglab.com

W: ptgcn.com

This product is exclusively available under Proteintech Group brand and is not available to purchase from any other manufacturer.

Selected Validation Data



1×10^6 HeLa cells (left) or Jurkat cells (right) were surface stained with 0.25 μ g Anti-Human MICA/MICB Rabbit Recombinant Antibody (98110-1-RR, Clone: 240735D5) and PE-Conjugated AffiniPure Goat Anti-Rabbit IgG(H+L) (red), or 0.25 μ g Isotype Control (blue). Cells were not fixed.

Biolayer interferometry (BLI) kinetic assays of 98110-1-RR against Human MICA were performed. The affinity constant is 0.907 nM.