

For Research Use Only

Anti-Human gp130/IL6ST Rabbit Recombinant Antibody, PBS Only

Catalog Number: 98121-1-PBS



Basic Information

Catalog Number: 98121-1-PBS	GenBank Accession Number: NM_002184.3	Purification Method: Protein A purification
Size: 1mg, 2 mg/ml	GeneID (NCBI): 3572	CloneNo.: 240992H1
Source: Rabbit	UNIPROT ID: P40189-1	
Isotype: IgG	Full Name: interleukin 6 signal transducer (gp130, oncostatin M receptor)	
	Calculated MW: 104 kDa	

Applications

Tested Applications:
FC

Species Specificity:
human

Background Information

Glycoprotein 130 (gp130, also known as IL6ST, CD130 or IL6-beta) is a ubiquitously expressed, signal-transducing receptor that serves as the signal transduction unit for IL-6 family of cytokines, including IL-6, IL-11, IL-27, leukemia inhibitory factor (LIF), OSM, ciliary neurotrophic factor (CNTF), cardiotrophin 1 (CT-1), and cardiotrophin-like cytokine (CLC) (PMID: 9143707; 20610800). These cytokines signal through the gp130/Jak/STAT pathway (PMID: 9716487). Binding of IL-6 to IL-6R induces gp130 homodimerization and formation of a high-affinity receptor complex, which activates Jaks. That causes phosphorylation of gp130 tyrosine residues which in turn activates STAT3.

Storage

Storage:
Store at -80°C.
The product is shipped with ice packs. Upon receipt, store it immediately at -80°C

Storage Buffer:
PBS Only

For technical support and original validation data for this product please contact:

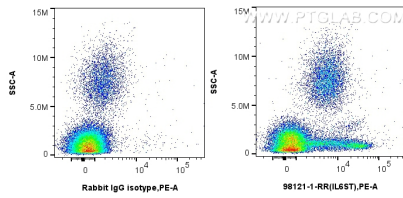
T: 4006900926

E: Proteintech-CN@ptglab.com

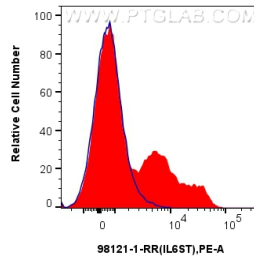
W: ptgcn.com

This product is exclusively available under Proteintech Group brand and is not available to purchase from any other manufacturer.

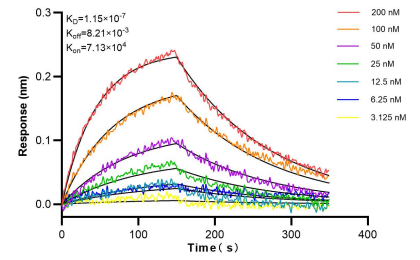
Selected Validation Data



1x10⁶ human peripheral blood leukocytes were surface stained with 0.25 ug Anti-Human gp130/IL6ST Rabbit Recombinant Antibody (98121-1-RR, Clone: 240992H1) or Isotype Control, and PE-conjugated Goat Anti-Rabbit IgG. Cells were incubated with FC Receptor Block prior to staining. Cells were not fixed. This data was developed using the same antibody clone with 98121-1-PBS in a different storage buffer formulation.



1x10⁶ human peripheral blood leukocytes were surface stained with 0.25 ug Anti-Human gp130/IL6ST Rabbit Recombinant Antibody (98121-1-RR, Clone: 240992H1) (red) or Isotype Control (blue), and PE-conjugated Goat Anti-Rabbit IgG. Cells were incubated with FC Receptor Block prior to staining. Cells were not fixed. This data was developed using the same antibody clone with 98121-1-PBS in a different storage buffer formulation.



Bi-layer interferometry (BLI) kinetic assays of 98121-1-RR against Human gp130/IL6ST were performed. The affinity constant is 115 nM.