

For Research Use Only

Anti-Human L1CAM/CD171 Rabbit Recombinant Antibody

Catalog Number: 98130-1-RR



Basic Information

Catalog Number: 98130-1-RR	GenBank Accession Number: BC126229	Purification Method: Protein A purification
Size: 100ug, 1000 ug/ml	GeneID (NCBI): 3897	CloneNo.: 240978A7
Source: Rabbit	UNIPROT ID: P32004	
Isotype: IgG	Full Name: L1 cell adhesion molecule	
	Calculated MW: 1257 aa, 140 kDa	

Applications

Tested Applications:
FC

Species Specificity:
human

Background Information

L1CAM, also known as NCAM-L1 or CD171, is a cell adhesion molecule of the immunoglobulin superfamily. It is a 200-220 kDa transmembrane glycoprotein composed of six Ig-like domains and five fibronectin type III repeats followed by a transmembrane region and a highly conserved cytoplasmic tail (PMID: 3412448; 22796939). L1CAM is primarily expressed in the nervous system and is involved in neuron-neuron adhesion, neurite fasciculation, outgrowth of neurites, cerebellar granule cell migration, neurite outgrowth on Schwann cells and interactions among epithelial cells of intestinal crypts (PMID: 3412448; 10767310). L1CAM is overexpressed in many human cancers and is often associated with bad prognosis (PMID: 27267927; 26111503). It has been reported that L1CAM can be proteolytically cleaved into a soluble fragment of 140 kDa and an intracellular fragment of 80-85 kDa (PMID: 30842511; 34380733). This antibody raised against 1206-1221aa of human L1CAM detects 200-220 kDa full-length L1CAM and 80-kDa cleaved fragment of L1CAM.

Storage

Storage:
Store at 2 - 8°C. Stable for one year after shipment.

Storage Buffer:
PBS with 0.09% sodium azide, pH 7.3.

For technical support and original validation data for this product please contact:

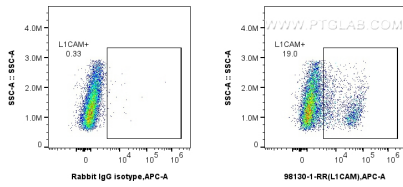
T: 4006900926

E: Proteintech-CN@ptglab.com

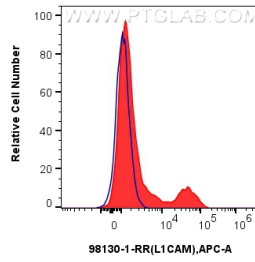
W: ptgcn.com

This product is exclusively available under Proteintech Group brand and is not available to purchase from any other manufacturer.

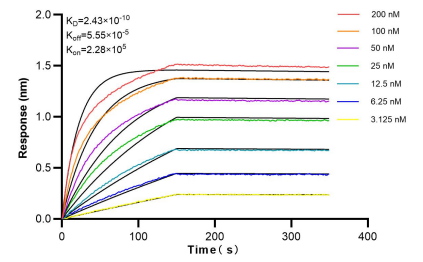
Selected Validation Data



1x10⁶ SK-N-SH cells were surface stained with 0.25 ug Anti-Human L1CAM/CD171 Rabbit Recombinant Antibody (98130-1-RR, Clone:240978A7) or 0.25 ug Isotype Control, and Multi-rAb CoraLite® Plus 647-Goat Anti-Rabbit Recombinant Secondary Antibody (H+L) (RGAR005). Cells were not fixed.



1x10⁶ SK-N-SH cells were surface stained with 0.25 ug Anti-Human L1CAM/CD171 Rabbit Recombinant Antibody (98130-1-RR, Clone: 240978A7) (red) or Isotype Control (blue), and Multi-rAb CoraLite® Plus 647-Goat Anti-Rabbit Recombinant Secondary Antibody (H+L) (RGAR005). Cells were not fixed.



Bi-layer interferometry (BLI) kinetic assays of 98130-1-RR against Human L1CAM/CD171 were performed. The affinity constant is 0.243 nM.