

For Research Use Only

# Anti-Human CD36 Rabbit Recombinant Antibody

Catalog Number: 98132-1-RR



## Basic Information

<b>Catalog Number:</b> 98132-1-RR	<b>GenBank Accession Number:</b> NM_001001548.3	<b>Purification Method:</b> Protein A purification
<b>Size:</b> 100ug, 1000 ug/ml	<b>GeneID (NCBI):</b> 948	<b>CloneNo.:</b> 241262D5
<b>Source:</b> Rabbit	<b>UNIPROT ID:</b> P16671-1	
<b>Isotype:</b> IgG	<b>Full Name:</b> CD36 molecule (thrombospondin receptor)	
	<b>Calculated MW:</b> 53 kDa	

## Applications

**Tested Applications:**  
FC

**Species Specificity:**  
human

## Background Information

CD36, also named GP3B and GP4, is an 88-kDa membrane glycoprotein present on platelets, monocytes, erythroid precursors, endothelial cells, and several tumor cell lines. CD36 binds to collagen, thrombospondin, anionic phospholipids, and long-chain fatty acids and may function in the transport and/or as a regulator of fatty acid transport and oxidized LDL. CD36 may function as a cell adhesion molecule. It mediates cytoadherence of Plasmodium falciparum parasitized erythrocytes. Mutation of CD36 will cause platelet glycoprotein IV deficiency which is known as CD36 deficiency. Genetic variations in CD36 are associated with susceptibility to coronary heart disease type 7 (CHDS7).

## Storage

**Storage:**  
Store at 2 - 8°C. Stable for one year after shipment.

**Storage Buffer:**  
PBS with 0.09% sodium azide, pH 7.3.

For technical support and original validation data for this product please contact:

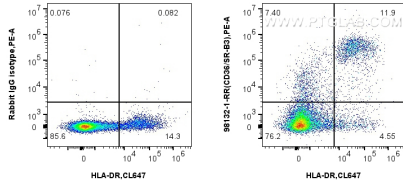
T: 4006900926

E: Proteintech-CN@ptglab.com

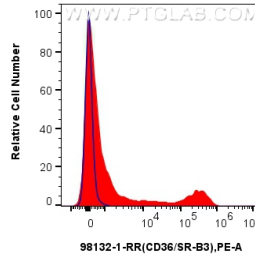
W: ptgcn.com

This product is exclusively available under Proteintech Group brand and is not available to purchase from any other manufacturer.

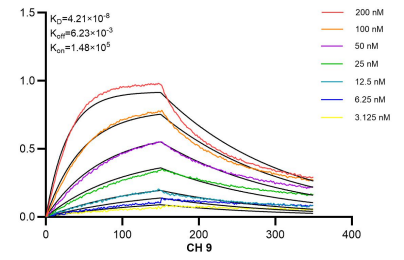
## Selected Validation Data



1x10<sup>6</sup> human PBMCs were surface stained with 0.25 ug Anti-Human CD36 Rabbit Recombinant Antibody (98132-1-RR, Clone: 241262D5) or Isotype Control, and PE-Conjugated AffiniPure Goat Anti-Rabbit IgG(H+L). Cells were co-stained with CoraLite® Plus 647 Anti-Human HLA-DR (L243) Mouse IgG2a Recombinant Antibody (CL647-65560, Clone: L243). Cells were incubated with FC Receptor Block prior to staining. Cells were not fixed.



1x10<sup>6</sup> human PBMCs were surface stained with 0.25 ug Anti-Human CD36 Rabbit Recombinant Antibody (98132-1-RR, Clone: 241262D5) (red) or Isotype Control (blue), and PE-Conjugated AffiniPure Goat Anti-Rabbit IgG(H+L). Cells were incubated with FC Receptor Block prior to staining. Cells were not fixed.



Biolayer interferometry (BLI) kinetic assays of 98132-1-RR against Human CD36 were performed. The affinity constant is 42.1 nM.