

For Research Use Only

# Anti-Human CD244 Rabbit Recombinant Antibody

Catalog Number: 98133-1-RR



## Basic Information

<b>Catalog Number:</b> 98133-1-RR	<b>GenBank Accession Number:</b> BC053985	<b>Purification Method:</b> Protein A purification
<b>Size:</b> 100ug, 1000 ug/ml	<b>GeneID (NCBI):</b> 51744	<b>CloneNo.:</b> 241260G10
<b>Source:</b> Rabbit	<b>UNIPROT ID:</b> Q9BZW8	
<b>Isotype:</b> IgG	<b>Full Name:</b> CD244 molecule, natural killer cell receptor 2B4	
	<b>Calculated MW:</b> 365 aa, 41 kDa	

## Applications

**Tested Applications:**  
FC

**Species Specificity:**  
human

## Background Information

CD244, also known as SLAMF4 or 2B4, is a type I transmembrane glycoprotein belonging to the signaling lymphocyte activation molecule (SLAM) family. It consists of an extracellular segment with two immunoglobulin (Ig)-like domains, a transmembrane region, and a cytoplasmic domain containing tyrosine-based motifs (PMID: 9841922; 30546369). CD244 is present on natural killer (NK) cells,  $\gamma \delta$  T cells, a subset of CD8+ T cells, monocytes, basophils, dendritic cells, and myeloid-derived suppressor cells (MDSCs) (PMID: 30546369). It binds to CD48 with high affinity and transmits stimulatory or inhibitory signals that regulate immune function (PMID: 9841922; 18523281).

## Storage

**Storage:**  
Store at 2 - 8°C. Stable for one year after shipment.

**Storage Buffer:**  
PBS with 0.09% sodium azide, pH 7.3.

For technical support and original validation data for this product please contact:

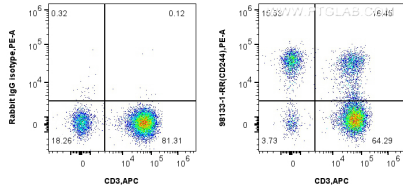
T: 4006900926

E: [Proteintech-CN@ptglab.com](mailto:Proteintech-CN@ptglab.com)

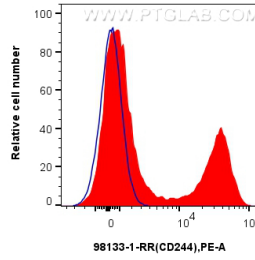
W: [ptgcn.com](http://ptgcn.com)

**This product is exclusively available under Proteintech Group brand and is not available to purchase from any other manufacturer.**

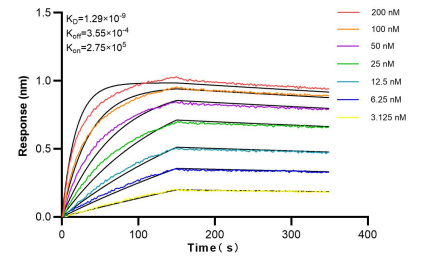
## Selected Validation Data



1x10<sup>6</sup> human PBMCs were surface stained with 0.25 ug Anti-Human CD244 Rabbit Recombinant Antibody (98133-1-RR, Clone: 241260G10) or Isotype Control, and PE-Conjugated Goat Anti-Rabbit IgG(H+L). Cells were co-stained with APC Anti-Human CD3 (OKT3) Mouse IgG2a Recombinant Antibody (APC-65569, Clone: OKT3). Cells were incubated with FC Receptor Block prior to staining. Cells were not fixed.



1x10<sup>6</sup> human PBMCs were surface stained with 0.25 ug Anti-Human CD244 Rabbit Recombinant Antibody (98133-1-RR, Clone:241260G10) (red) or Isotype Control (blue), and PE-Conjugated Goat Anti-Rabbit IgG(H+L). Cells were incubated with FC Receptor Block prior to staining. Cells were not fixed.



Bi-layer interferometry (BLI) kinetic assays of 98133-1-RR against Human CD244 were performed. The affinity constant is 1.29 nM.