

For Research Use Only

# Anti-Human CXCL8/IL-8 Rabbit Recombinant Antibody, PBS Only

Catalog Number: 98137-1-PBS



## Basic Information

<b>Catalog Number:</b> 98137-1-PBS	<b>GenBank Accession Number:</b> BC013615	<b>Purification Method:</b> Protein A purification
<b>Size:</b> 1mg, 2 mg/ml	<b>GeneID (NCBI):</b> 3576	<b>CloneNo.:</b> 240889B2
<b>Source:</b> Rabbit	<b>ENSEMBL Gene ID:</b> ENSG00000169429	
<b>Isotype:</b> IgG	<b>UNIPROT ID:</b> P10145	
	<b>Full Name:</b> interleukin 8	
	<b>Calculated MW:</b> 99 aa, 11 kDa	

## Applications

**Tested Applications:**  
FC (Intra)

**Species Specificity:**  
human

## Background Information

Interleukin 8 (IL-8), also known as CXCL8, is a CXC chemokine family member. This chemokine is secreted by a variety of cell types including monocyte/macrophages, T cells, neutrophils, fibroblasts, endothelial cells, and various tumor cell lines in response to inflammatory stimuli. IL-8 has two primary functions. It induces chemotaxis in target cells, primarily neutrophils but also other granulocytes, causing them to migrate toward the site of infection. IL-8 also induces phagocytosis once they have arrived. This gene is believed to play a role in the pathogenesis of bronchiolitis, a common respiratory tract disease caused by viral infection. IL-8 is also known to be a potent promoter of angiogenesis. IL-8 has been associated with tumor angiogenesis, metastasis, and poor prognosis in breast cancer. IL-8 may present a novel therapeutic target for estrogen driven breast carcinogenesis and tumor progression.

## Storage

**Storage:**  
Store at -80°C.  
**The product is shipped with ice packs. Upon receipt, store it immediately at -80°C**

**Storage Buffer:**  
PBS Only

For technical support and original validation data for this product please contact:

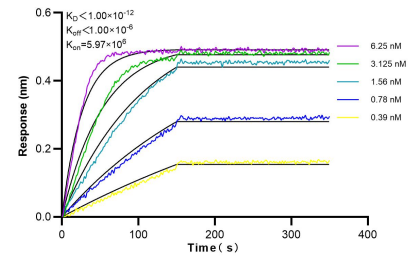
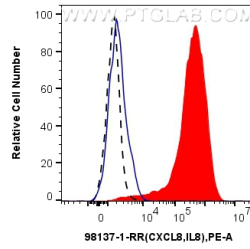
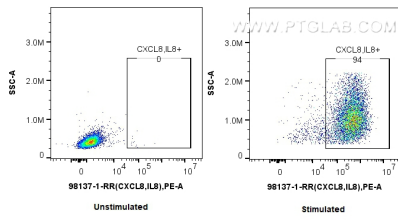
T: 4006900926

E: [Proteintech-CN@ptglab.com](mailto:Proteintech-CN@ptglab.com)

W: [ptgcn.com](http://ptgcn.com)

**This product is exclusively available under Proteintech Group brand and is not available to purchase from any other manufacturer.**

## Selected Validation Data



1x10<sup>6</sup> untreated or IFN gamma, LPS and Brefeldin A treated human PBMCs were intracellularly stained with 0.25 ug Anti-Human CXCL8/IL-8 Rabbit Recombinant Antibody (98137-1-RR, Clone: 240889B2) and PE-Conjugated Goat Anti-Rabbit IgG(H+L). Cells were fixed with 4% PFA and permeabilized with Flow Cytometry Perm Buffer (PF00011-C). Granulocytes were gated. This data was developed using the same antibody clone with 98137-1-PBS in a



1x10<sup>6</sup> IFN gamma, LPS and Brefeldin A treated human PBMCs were intracellularly stained with 0.25 ug Anti-Human CXCL8/IL-8 Rabbit Recombinant Antibody (98137-1-RR, Clone: 240889B2) (red) or Isotype Control (blue) and PE-Conjugated Goat Anti-Rabbit IgG(H+L). 1x10<sup>6</sup> unstimulated human PBMCs were intracellularly stained with 0.25 ug Anti-Human CXCL8/IL-8 Rabbit Recombinant Antibody (98137-1-RR, Clone: 240889B2) (black, dashed) and PE-Conjugated Goat Anti-



Bioluminescence resonance energy transfer (BLI) kinetic assays of 98137-1-RR against Human CXCL8/IL-8 were performed. The affinity constant is below 1 pM.