

For Research Use Only

Anti-Human PDGFR alpha/CD140a Rabbit Recombinant Antibody, PBS Only

Catalog Number: 98141-1-PBS



Basic Information

Catalog Number:

98141-1-PBS

Size:

1mg, 2 mg/ml

Source:

Rabbit

Isotype:

IgG

GenBank Accession Number:

BC015186

GeneID (NCBI):

5156

UNIPROT ID:

P16234

Full Name:

platelet-derived growth factor
receptor, alpha polypeptide

Calculated MW:

123 kDa

Purification Method:

Protein A purification

CloneNo.:

241658H4

Applications

Tested Applications:

FC, Cytometric bead array, Indirect ELISA

Species Specificity:

human

Background Information

Platelet-derived growth factor receptor alpha (PDGFR alpha, also known as CD140a) is a cell surface tyrosine kinase receptor for members of the platelet-derived growth factor family. PDGFRA is implicated in the regulation of embryonic development, tumorigenesis, cell proliferation, survival, and chemotaxis. Mutations in the PDGFRA gene have been associated with idiopathic hypereosinophilic syndrome, somatic and familial gastrointestinal stromal tumors, and a variety of other cancers.

Storage

Storage:

Store at -80°C.

The product is shipped with ice packs. Upon receipt, store it immediately at -80°C

Storage Buffer:

PBS Only

For technical support and original validation data for this product please contact:

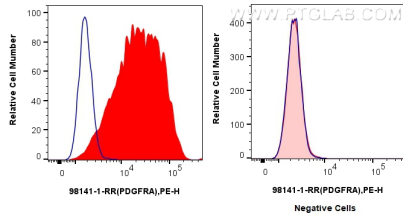
T: 4006900926

E: Proteintech-CN@ptglab.com

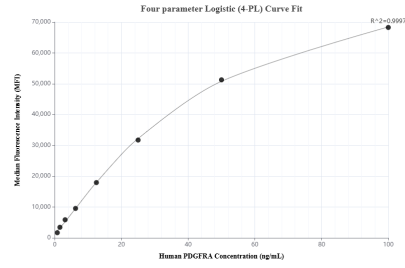
W: ptgcn.com

This product is exclusively available under Proteintech Group brand and is not available to purchase from any other manufacturer.

Selected Validation Data



1x10⁶ MG-63 cells (left) or A-172 cells (right) were surface stained with 0.25 μ g Anti-Human PDGFR α /CD140a Rabbit Recombinant Antibody (98141-1-RR, Clone: 241658H4) (red) or Isotype Control (blue), and PE-Conjugated Goat Anti-Rabbit IgG(H+L). Cells were not fixed. This data was developed using the same antibody clone with 98141-1-PBS in a different storage buffer formulation.



Cytometric bead array standard curve of MP01256-1, PDGFRA Recombinant Matched Antibody Pair, PBS Only. Capture antibody: 84383-5-PBS. Detection antibody: 98141-1-PBS. Standard: RP00003. Range: 0.781-100 ng/mL