

For Research Use Only

Anti-Human IL-12RB1/CD212 Rabbit Recombinant Antibody, PBS Only

Catalog Number: 98149-1-PBS



Basic Information

Catalog Number:

98149-1-PBS

Size:

1mg, 2 mg/ml

Source:

Rabbit

Isotype:

IgG

GenBank Accession Number:

BC029121

GeneID (NCBI):

3594

UNIPROT ID:

P42701

Full Name:

interleukin 12 receptor, beta 1

Calculated MW:

662 aa, 73 kDa

Purification Method:

Protein A purification

CloneNo.:

241661H1

Applications

Tested Applications:

FC

Species Specificity:

human

Background Information

Interleukin-12 receptor subunit beta-1 (IL-12RB1), also named as CD212, is a 662 amino acid protein, which contains 5 fibronectin type-III domains and belongs to the type I cytokine receptor family. IL-12RB1 localizes in the membrane and functions as an interleukin receptor which binds IL-12 with low affinity and is involved in IL-12 transduction. Associated with IL-12RB2 it forms a functional, high affinity receptor for IL-12. It can also associate with IL23R to form the interleukin-23 receptor which functions in IL-23 signal transduction probably through activation of the Jak-Stat signaling cascade.

Storage

Storage:

Store at -80°C.

The product is shipped with ice packs. Upon receipt, store it immediately at -80°C

Storage Buffer:

PBS Only

For technical support and original validation data for this product please contact:

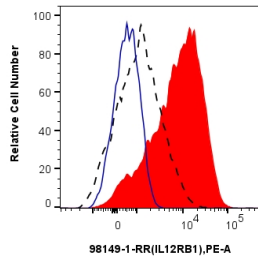
T: 4006900926

E: Proteintech-CN@ptglab.com

W: ptgcn.com

This product is exclusively available under Proteintech Group brand and is not available to purchase from any other manufacturer.

Selected Validation Data



1x10⁶ anti-CD3/CD28 treated human PBMCs were surface stained with 0.25 ug Anti-Human IL-12RB1/CD212 Rabbit Recombinant Antibody (98149-1-RR, Clone: 241661H1) (red) or Isotype Control (blue) and PE-Conjugated Goat Anti-Rabbit IgG(H+L). 1x10⁶ untreated human PBMCs were surface stained with 0.25 ug Anti-Human IL-12RB1/CD212 Rabbit Recombinant Antibody (98149-1-RR, Clone: 241661H1) (black, dashed) and PE-Conjugated Goat Anti-Rabbit IgG(H+L). Cells were not