

For Research Use Only

# Anti-Human CD122/IL-2RB Rabbit Recombinant Antibody, PBS Only

Catalog Number: 98151-1-PBS



## Basic Information

<b>Catalog Number:</b> 98151-1-PBS	<b>GenBank Accession Number:</b> BC025691	<b>Purification Method:</b> Protein A purification
<b>Size:</b> 1mg, 2 mg/ml	<b>GeneID (NCBI):</b> 3560	<b>CloneNo.:</b> 241677H7
<b>Source:</b> Rabbit	<b>ENSEMBL Gene ID:</b> ENSG00000100385	
<b>Isotype:</b> IgG	<b>UNIPROT ID:</b> P14784	
	<b>Full Name:</b> interleukin 2 receptor, beta	
	<b>Calculated MW:</b> 551 aa, 61 kDa	

## Applications

**Tested Applications:**  
FC

**Species Specificity:**  
human

## Background Information

The interleukin 2 receptor, which is involved in T cell-mediated immune responses, is present in 3 forms with respect to the ability to bind interleukin 2. The low-affinity form is a monomer of the alpha subunit and is not involved in signal transduction. The intermediate affinity form consists of an alpha/beta subunit heterodimer, while the high affinity form consists of an alpha/beta/gamma subunit heterotrimer. The beta subunit (IL2RB, also known as CD122 and p75) is involved in receptor-mediated endocytosis and transduces the mitogenic signals of interleukin 2.

## Storage

**Storage:**  
Store at -80°C.  
**The product is shipped with ice packs. Upon receipt, store it immediately at -80°C**

**Storage Buffer:**  
PBS Only

For technical support and original validation data for this product please contact:

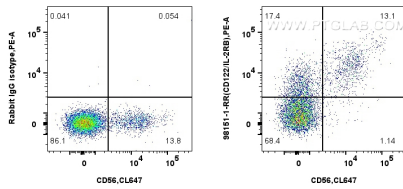
T: 4006900926

E: [Proteintech-CN@ptglab.com](mailto:Proteintech-CN@ptglab.com)

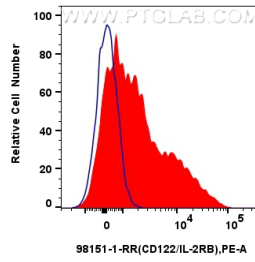
W: [ptgcn.com](http://ptgcn.com)

**This product is exclusively available under Proteintech Group brand and is not available to purchase from any other manufacturer.**

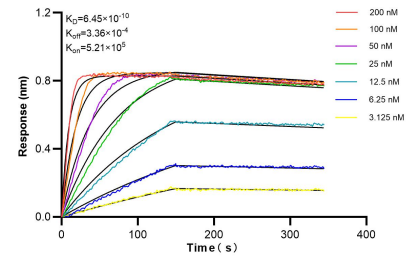
## Selected Validation Data



1x10<sup>6</sup> human PBMCs were surface stained with 0.25 ug Anti-Human CD122/IL-2RB Rabbit Recombinant Antibody (98151-1-RR, Clone: 241677H7) or 0.25 ug Rabbit IgG Isotype Control Recombinant Antibody (98136-1-RR, Clone: 240953C9), and PE-Conjugated Goat Anti-Rabbit IgG(H+L). Cells were co-stained with CoraLite® Plus 647 Anti-Human NCAM1/CD56 Rabbit Recombinant Antibody (CL647-98033, Clone: 240078A7). Cells were incubated with FC Receptor Block prior to



1x10<sup>6</sup> human PBMCs were surface stained with 0.25 ug Anti-Human CD122/IL-2RB Rabbit Recombinant Antibody (98151-1-RR, Clone: 241677H7) (red) or 0.25 ug Rabbit IgG Isotype Control Recombinant Antibody (98136-1-RR, Clone: 240953C9) (blue), and PE-Conjugated Goat Anti-Rabbit IgG(H+L). Cells were incubated with FC Receptor Block prior to staining. Cells were not fixed. Lymphocytes were gated. This data was developed using the same antibody clone with 98151-1-PBS in



Bi-layer interferometry (BLI) kinetic assays of 98151-1-RR against Human CD122/IL-2RB were performed. The affinity constant is 0.645 nM.