

For Research Use Only

Anti-Mouse HER2/ErbB2 Rabbit Recombinant Antibody, PBS Only

Catalog Number: 98153-1-PBS



Basic Information

Catalog Number:

98153-1-PBS

Size:

1mg, 2 mg/ml

Source:

Rabbit

Isotype:

IgG

GenBank Accession Number:

NM_001003817.1

GeneID (NCBI):

13866

UNIPROT ID:

P70424

Full Name:

v-erb-b2 erythroblastic leukemia
viral oncogene homolog 2,
neuro/glioblastoma derived
oncogene homolog (avian)

Calculated MW:

139 kDa

Purification Method:

Protein A purification

CloneNo.:

241366E6

Applications

Tested Applications:

FC

Species Specificity:

mouse

Background Information

HER2, also known as ErbB2, Neu, and CD340, is a 185-kDa transmembrane glycoprotein member of the epidermal growth factor (EGF) receptor family of receptor tyrosine kinases. It has no ligand-binding domain and therefore cannot bind growth factors. However, it does bind tightly to other ligand-bound EGF receptor family members to form a heterodimer, stabilizing ligand binding and enhancing kinase-mediated activation of downstream signaling pathways, such as those involving mitogen-activated protein kinase and phosphatidylinositol-3 kinase.

Storage

Storage:

Store at -80°C.

The product is shipped with ice packs. Upon receipt, store it immediately at -80°C

Storage Buffer:

PBS Only

For technical support and original validation data for this product please contact:

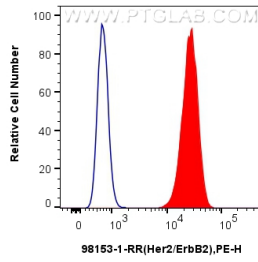
T: 4006900926

E: Proteintech-CN@ptglab.com

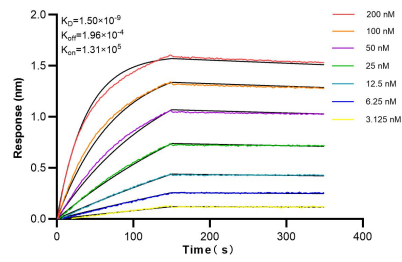
W: ptgcn.com

This product is exclusively available under Proteintech Group brand and is not available to purchase from any other manufacturer.

Selected Validation Data



1×10^6 NIH/3T3 cells were surface stained with 0.25 μ g Anti-Mouse HER2/ErbB2 Rabbit Recombinant Antibody (98153-1-RR, Clone: 241366E6) (red) or Isotype Control (blue), and PE-Conjugated Goat Anti-Rabbit IgG(H+L). Cells were not fixed. This data was developed using the same antibody clone with 98153-1-PBS in a different storage buffer formulation.



Biolayer interferometry (BLI) kinetic assays of 98153-1-RR against Mouse HER2/ErbB2 were performed. The affinity constant is 1.50 nM.