

For Research Use Only

# Anti-Human Integrin alpha-5/CD49e Rabbit Recombinant Antibody, PBS Only

Catalog Number: 98171-1-PBS



## Basic Information

Catalog Number:

98171-1-PBS

Size:

1mg, 2 mg/ml

Source:

Rabbit

Isotype:

IgG

GenBank Accession Number:

BC008786

GeneID (NCBI):

3678

UNIPROT ID:

P08648

Full Name:

integrin, alpha 5 (fibronectin receptor,  
alpha polypeptide)

Calculated MW:

115 kDa

Purification Method:

Protein A purification

CloneNo.:

241685D4

## Applications

Tested Applications:

FC

Species Specificity:

human

## Background Information

Integrins are cell adhesion receptors that are heterodimers composed of non-covalently associated alpha and beta subunits. Integrin alpha-5 (ITGA5, also known as CD49e), belongs to the integrin alpha chain family, primarily binds to Integrin beta 1 (ITGB1) to form an  $\alpha 5 \beta 1$  heterodimer (PMID: 33711961). Integrin  $\alpha 5 \beta 1$  is a specific receptor of fibronectin through its arginine-glycine-aspartic acid (RGD) binding site (PMID: 19608542). Integrin  $\alpha 5 \beta 1$  plays roles in cell adhesion, migration and matrix formation, and has emerged as an essential mediator in many human carcinomas (PMID: 33408483).

## Storage

Storage:

Store at -80°C.

**The product is shipped with ice packs. Upon receipt, store it immediately at -80°C**

Storage Buffer:

PBS Only

For technical support and original validation data for this product please contact:

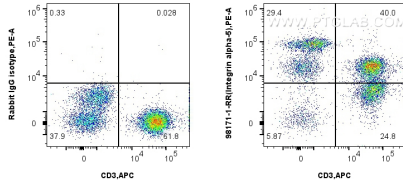
T: 4006900926

E: Proteintech-CN@ptglab.com

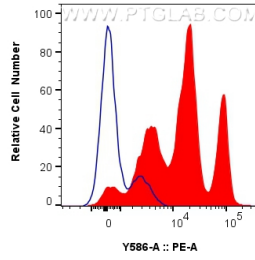
W: ptgcn.com

**This product is exclusively available under Proteintech Group brand and is not available to purchase from any other manufacturer.**

## Selected Validation Data



1x10<sup>6</sup> human PBMCs were surface stained with 0.25 ug Anti-Human Integrin alpha-5/CD49e Rabbit Recombinant Antibody (98171-1-RR, Clone: 241685D4) or 0.25 ug Isotype Control, and PE-Conjugated Goat Anti-Rabbit IgG(H+L). Cells were co-stained with APC Anti-Human CD3 (OKT3). Cells were incubated with FC Receptor Block prior to staining. Cells were not fixed. This data was developed using the same antibody clone with 98171-1-PBS in a different storage buffer



1x10<sup>6</sup> human PBMCs were surface stained with 0.25 ug Anti-Human Integrin alpha-5/CD49e Rabbit Recombinant Antibody (98171-1-RR, Clone: 241685D4) (red) or 0.25 ug Isotype Control (blue), and PE-Conjugated Goat Anti-Rabbit IgG(H+L). Cells were incubated with FC Receptor Block prior to staining. Cells were not fixed. This data was developed using the same antibody clone with 98171-1-PBS in a different storage buffer formulation.