

For Research Use Only

Anti-Human IL-23R Rabbit Recombinant Antibody, PBS Only

Catalog Number: 98180-1-PBS



Basic Information

Catalog Number:

98180-1-PBS

Size:

1mg, 2 mg/ml

Source:

Rabbit

Isotype:

IgG

GenBank Accession Number:

NM_144701.3

GeneID (NCBI):

149233

UNIPROT ID:

Q5VWK5-1

Full Name:

interleukin 23 receptor

Calculated MW:

72 kDa

Purification Method:

Protein A purification

CloneNo.:

240905B5

Applications

Tested Applications:

FC

Species Specificity:

human

Background Information

Storage

Storage:

Store at -80°C.

The product is shipped with ice packs. Upon receipt, store it immediately at -80°C

Storage Buffer:

PBS Only

For technical support and original validation data for this product please contact:

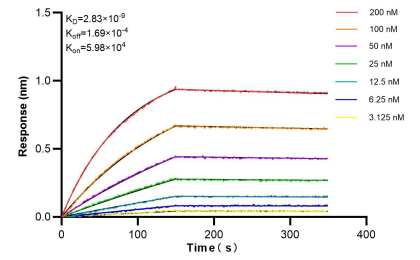
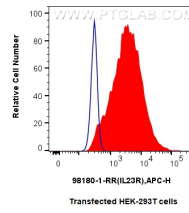
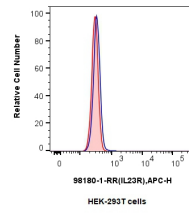
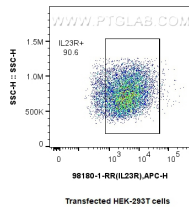
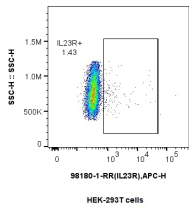
T: 4006900926

E: Proteintech-CN@ptglab.com

W: ptgcn.com

This product is exclusively available under Proteintech Group brand and is not available to purchase from any other manufacturer.

Selected Validation Data



1x10⁶ HEK-293T cells or IL-23R-transfected HEK-293T cells were surface stained with 0.25 ug Anti-Human IL-23R Rabbit Recombinant Antibody (98180-1-RR, Clone: 240905B5) and Multi-rAb CoraLite® Plus 647-Goat Anti-Rabbit Recombinant Secondary Antibody (H+L) (RGAR005). Cells were not fixed. This data was developed using the same antibody clone with 98180-1-PBS in a different storage buffer formulation.

1x10⁶ HEK-293T cells (left) or IL-23R-transfected HEK-293T cells (right) were surface stained with 0.25 ug Anti-Human IL-23R Rabbit Recombinant Antibody (98180-1-RR, Clone: 240905B5) (red) or Isotype Control (blue), and Multi-rAb CoraLite® Plus 647-Goat Anti-Rabbit Recombinant Secondary Antibody (H+L) (RGAR005). Cells were not fixed. This data was developed using the same antibody clone with 98180-1-PBS in a different storage buffer formulation.

Biacore interferometry (BLI) kinetic assays of 98180-1-RR against Human IL-23R were performed. The affinity constant is 2.83 nM.