

For Research Use Only

# Anti-Human E-selectin/CD62E Rabbit Recombinant Antibody

Catalog Number: 98189-1-RR



## Basic Information

<b>Catalog Number:</b> 98189-1-RR	<b>GenBank Accession Number:</b> BC142711	<b>Purification Method:</b> Protein A purification
<b>Size:</b> 100ug, 1000 µg/ml	<b>GeneID (NCBI):</b> 6401	<b>CloneNo.:</b> 241767H6
<b>Source:</b> Rabbit	<b>UNIPROT ID:</b> P16581	
<b>Isotype:</b> IgG	<b>Full Name:</b> selectin E	
	<b>Calculated MW:</b> 610 aa, 67 kDa	

## Applications

**Tested Applications:**  
FC

**Species Specificity:**  
human

## Background Information

E-selectin, also known as CD62E or ELAM-1, is a member of the selectin family of adhesion molecules that also includes L-selectin and P-selectin. E-selectin is an inducible endothelial cell surface molecule. Its expression on endothelial cells is transcriptionally upregulated by various proinflammatory substances such as IL-1, TNF  $\alpha$  and lipopolysaccharide (LPS). Besides, it can be secreted by endothelial cells, and can be detected in a soluble form (sE-selectin) in serum. During inflammation, E-selectin plays an important part in recruiting leukocytes to the site of injury. (PMID: 2827173; 1382417; 8943958)

## Storage

**Storage:**  
Store at 2 - 8°C. Stable for one year after shipment.

**Storage Buffer:**  
PBS with 0.09% sodium azide, pH 7.3.

For technical support and original validation data for this product please contact:

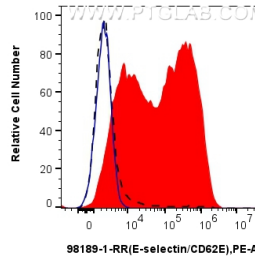
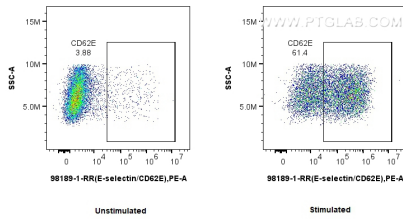
T: 4006900926

E: Proteintech-CN@ptglab.com

W: ptgcn.com

This product is exclusively available under Proteintech Group brand and is not available to purchase from any other manufacturer.

## Selected Validation Data



1x10<sup>6</sup> untreated or TNF alpha treated HUVEC cells were surface stained with 0.25 ug Anti-Human E-selectin/CD62E Rabbit Recombinant Antibody (98189-1-RR, Clone: 241767H6) and PE-Conjugated Goat Anti-Rabbit IgG(H+L). Cells were not fixed.

1x10<sup>6</sup> TNF alpha treated HUVEC cells were surface stained with 0.25 ug Anti-Human E-selectin/CD62E Rabbit Recombinant Antibody (98189-1-RR, Clone: 241767H6) (red) or Rabbit IgG Isotype Control Recombinant Antibody (98136-1-RR, Clone: 240953C9) (blue), and PE-Conjugated Goat Anti-Rabbit IgG(H+L). 1x10<sup>6</sup> untreated HUVEC cells were surface stained with 0.25 ug Anti-Human E-selectin/CD62E Rabbit Recombinant Antibody (98189-1-RR, Clone: 241767H6) and PE-