

For Research Use Only

# Anti-Human CD40 Rabbit Recombinant Antibody, PBS Only

Catalog Number: 98191-1-PBS



## Basic Information

<b>Catalog Number:</b> 98191-1-PBS	<b>GenBank Accession Number:</b> NM_001250.6	<b>Purification Method:</b> Protein A purification
<b>Size:</b> 1mg, 2 mg/ml	<b>GeneID (NCBI):</b> 958	<b>CloneNo.:</b> 241760A9
<b>Source:</b> Rabbit	<b>ENSEMBL Gene ID:</b> ENSG00000101017	
<b>Isotype:</b> IgG	<b>UNIPROT ID:</b> P25942-1	
	<b>Full Name:</b> CD40 molecule, TNF receptor superfamily member 5	
	<b>Calculated MW:</b> 31kDa	

## Applications

**Tested Applications:**  
FC

**Species Specificity:**  
human

## Background Information

CD40, also named as TNFRSF5 and Bp50, is a receptor for TNFSF5/CD40LG. It is a member of the TNFR superfamily and is responsible for the efficient activation of cell-mediated and humoral immune responses via activated T cells and B cells respectively. Defects in CD40 lead to hyper-IgM immunodeficiency syndrome type 3 (HIGM3) (PMID: 11675497). This is an autosomal recessive disorder that includes the inability of B cells to undergo isotype switching, a key step in the final differentiation of the humoral immune response, and an inability to mount an antibody-specific immune response.

## Storage

**Storage:**  
Store at -80°C.  
**The product is shipped with ice packs. Upon receipt, store it immediately at -80°C**

**Storage Buffer:**  
PBS Only

For technical support and original validation data for this product please contact:

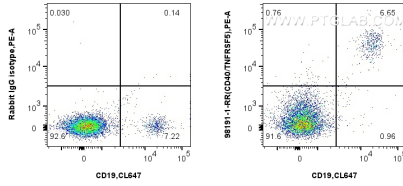
T: 4006900926

E: [Proteintech-CN@ptglab.com](mailto:Proteintech-CN@ptglab.com)

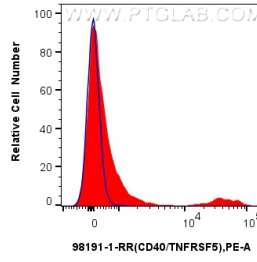
W: [ptgcn.com](http://ptgcn.com)

**This product is exclusively available under Proteintech Group brand and is not available to purchase from any other manufacturer.**

## Selected Validation Data



1x10<sup>6</sup> human PBMCs were surface stained with 0.25 ug Anti-Human CD40 Rabbit Recombinant Antibody (98191-1-RR, Clone: 241760A9) or 0.25 ug Rabbit IgG Isotype Control Recombinant Antibody (98136-1-RR, Clone: 240953C9), and PE-Conjugated Goat Anti-Rabbit IgG(H+L). Cells were co-stained with CoraLite® Plus 647 Anti-Human CD19 (4G7). Cells were incubated with FC Receptor Block prior to staining. Cells were not fixed. This data was developed using the same



1x10<sup>6</sup> human PBMCs were surface stained with 0.25 ug Anti-Human CD40 Rabbit Recombinant Antibody (98191-1-RR, Clone: 241760A9) (red) or 0.25 ug Rabbit IgG Isotype Control Recombinant Antibody (98136-1-RR, Clone: 240953C9) (blue), and PE-Conjugated Goat Anti-Rabbit IgG(H+L). Cells were incubated with FC Receptor Block prior to staining. Cells were not fixed. This data was developed using the same antibody clone with 98191-1-PBS in a different storage buffer

